



www.diadent.co.kr

ISO 13485



2025/2026

DIADENT GROUP INTERNATIONAL

REF

2025/01/02 [REV.01]

DiaDent's Network

DiaDent Group International (Korea & International)

16, Osongsaengmyeong 4-ro, Osong-eup, Heungdeok-gu Cheongju-si Chungcheong buk-do, 28161, South Korea
Tel) 82-43-266-2315 | Fax) 82-43-262-8658 | E-mail: diadent@diadent.co.kr

Website



DiaDent Group International Inc. (Canada & USA)

11-3871 North Fraser Way, Burnaby B.C, Canada V5J 5G6
Tel) 1-604-451-8851 | Fax) 1-604-451-8865
E-mail: diadent@diadent.com

DiaDent Europe B.V (Europe)

Antennestraat 70, 1322 AS Almere, the Netherlands
Tel) 31-36-549-8607 | Fax) 31-36-536-7317
E-mail: diadent@diadent europe.com



©Copyright 2025 DiaDent Group International
www.diadent.co.kr

Welcome to DiaDent

Since its founding in 1985, DiaDent has been a pioneer in the dental industry, specializing in endodontic supplies. With our unwavering “Passion for Innovation” we are dedicated to delivering high-quality dental products that meet the diverse needs of dental professionals worldwide.

As a leading manufacturer in the endodontic field, DiaDent has expanded its capabilities to provide a wide range of dental materials, including a comprehensive production line of chemical consumables. Leveraging world-class technical expertise, we continue to set the standard for excellence in the global dental industry, establishing ourselves as leaders in advanced product manufacturing.

Our 40-Year Journey

DiaDent began its journey as a manufacturer and exporter of Gutta Percha Points and Paper Points. Over the years, we have evolved into a global leader with an extensive production line of dental chemical consumables, including endodontic materials and devices. DiaDent’s innovative, reliable products and processes have become globally recognized symbols of quality. Today, we export to over 900 dealers in 131 countries, demonstrating our commitment to serving the global dental community.

Commitment to Quality and Innovation

At DiaDent, our unwavering dedication to quality permeates every aspect of our business. All our products undergo rigorous inspection under a stringent Quality Management System compliant with ISO 13485 standards, ensuring our customers receive only the highest-quality, most reliable products.

To sustain our industry leadership, we continually invest in research and development (R&D). By enhancing our R&D capabilities, we develop cutting-edge dental devices and materials that meet customer needs and set new benchmarks in dental technology.

A Responsible Approach to Global Business

At DiaDent, every challenge is seen as an opportunity for growth and innovation. Committed to the highest standards, we actively create new markets and take a responsible approach to global business operations. Through close collaboration with our partners and customers, we ensure that our products consistently exceed expectations.

Gratitude and Vision for the Future

We extend our heartfelt gratitude to our valued customers and business partners for their continued trust and support. Your confidence inspires us to pursue excellence in everything we do. Moving forward, DiaDent is committed to reinforcing its position as a leading global authority in the dental industry. Wishing everyone a successful and prosperous year ahead.

Sincerely,

DiaDent’s Network



DiaDent Group International (Korea & International)

16, Osongsaengmyeong 4-ro, Osong-eup, Heungdeok-gu Cheongju-si
Chungcheong buk-do, 28161, South Korea
Tel) 82-43-266-2315 | Fax) 82-43-262-8658 | E-mail: diadent@diadent.co.kr



DiaDent Group International Inc. (Canada & USA)

11-3871 North Fraser Way, Burnaby B.C, Canada V5J 5G6
Tel) 1-604-451-8851 | Fax) 1-604-451-8865 | E-mail: diadent@diadent.com



DiaDent Europe B.V (Europe)

Antennestraat 70, 1322 AS Almere, the Netherlands
Tel) 31-36-549-8607 | Fax) 31-36-536-7317 | E-mail: diadent@diadenturope.com



DiaDent's innovative and reliable items, services and processes are recognized as the world's brand, today DiaDent has been exporting them to over 900 dealers in 131 countries all around the globe.



ALBANIA
 ALGERIA
 ARMENIA
 ARGENTINA
 AUSTRALIA
 AZERBAIJAN
 AUSTRIA
 BAHRAIN
 BANGLADESH
 BELARUS
 BELGIUM
 BELIZE
 BOLIVIA
 BOSNIA & HERZEGOVINA
 BRAZIL
 BRUNEI
 BULGARIA

CANADA
 CAMBODIA
 COSTA RICA
 CURACAO
 CHILE
 CHINA
 COLOMBIA
 CROATIA
 CYPRUS
 CZECH REPUBLIC
 DENMARK
 DOMINICAN REPUBLIC
 ECUADOR
 EGYPT
 EL SALVADOR
 ESTONIA
 ETHIOPIA

FINLAND
 FRANCE
 GEORGIA
 GERMANY
 GHANA
 GREECE
 GUATEMALA
 HONG KONG
 HONDURAS
 HUNGARY
 INDIA
 INDONESIA
 IRAN
 IRAQ
 IRELAND
 ISRAEL
 ITALY

JAMAICA
 JAPAN
 JORDAN
 KAZAKHSTAN
 KENYA
 KOREA
 KOSOVO
 KUWAIT
 KYRGYZSTAN
 LAOS
 LATVIA
 LEBANON
 LIBYA
 LIECHTENSTEIN
 LITHUANIA
 LUXEMBOURG
 MACEDONIA

MADAGASCAR
 MALAYSIA
 MALDIVES
 MALI
 MALTA
 MAURITIUS
 MEXICO
 MOLDOVA
 MONGOLIA
 MONTENEGRO
 MOROCCO
 MYANMAR
 NETHERLANDS
 NEW ZEALAND
 NEPAL
 NICARAGUA
 NIGERIA

NORWAY
 OMAN
 PAKISTAN
 PALESTINE
 PANAMA
 PAPUA NEW GUINEA
 PARAGUAY
 PERU
 PHILIPPINES
 POLAND
 POLYNESIA
 PORTUGAL
 QATAR
 REUNION ISLAND
 ROMANIA
 RUSSIA
 RWANDA

SAUDI ARABIA
 SENEGAL
 SERBIA
 SINGAPORE
 SLOVAKIA
 SLOVENIA
 SOUTH AFRICA
 SPAIN
 SRI LANKA
 SUDAN
 SWEDEN
 SWITZERLAND
 SYRIA
 TAIWAN
 THAILAND
 TRINIDAD & TOBAGO
 TUNISIA

TURKIYE
 U.A.E
 UGANDA
 U.K
 UKRAINE
 U.S.A
 URUGUAY
 UZBEKISTAN
 VENEZUELA
 VIETNAM
 YEMEN
 ZIMBABWE

INDEX

ROOT CANAL OBTURATION 8~25p.

- Dia-Root Bio Sealer (Bioceramic Root Canal Sealing Material)
- Dia-Root Bio MTA (Mineral Trioxide Aggregate)
- DiaPex Plus (Premixed Calcium Hydroxide Paste with Iodoform)
- DiaPaste (Premixed Calcium Hydroxide paste with Barium Sulfate)
- Dia-Proseal (Root Canal Sealing Material)
- Millimeter Marked Gutta Percha Points
- Special Taper Gutta Percha Points
- Millimeter Marked Paper Points
- Special Taper Paper Points
- Temporary Restorative Materials
- Dia-Ultrasonic **NEW** (Ultrasonic Endodontic Activator)
- Dia-Duo (Cordless Warm Vertical Compaction & Backfill Obturation Device)
- Duo-Pen (Cordless Warm Vertical Compaction Device)
- Duo-Gun (Cordless Backfill Obturation Device)

COSMETIC & RESTORATIVES 26~39p.

- Restorative Nano Hybrid Composite Resin
- Flowable Restorative Composite Resin
- Single Shade Bulk Fill Flowable Resin **NEW**
- Light Cure Bonding Agent
- 37% Etching Gel
- Universal Bonding Agent **NEW**
- Dual-Cure Adhesive Resin Cement **NEW**
- Temporary Cement (Non-Eugenol) **NEW**
- Cordless LED Curing Light

ENDODONTIC INSTRUMENTS 40~50p.

- Nickel Titanium Rotary Files with Gold Heat Treatment
- Nickel Titanium Rotary Files with Blue Heat Treatment
- Gate Drills, Peeso Reamers
- Nickel Titanium Hand Files
- Stainless Steel Hand Files
- Endo Condenser
- EDTA Root Canal Preparation Cream
- Endodontic Irrigation Tips
- Endo Gauges
- Irrigation Syringes

ROOT CANAL OBTURATION

- Dia-Root Bio Sealer (Bioceramic Root Canal Sealing Material)
- Dia-Root Bio MTA (Mineral Trioxide Aggregate)
- DiaPex Plus (Premixed Calcium Hydroxide Paste with Iodoform)
- DiaPaste (Premixed Calcium Hydroxide paste with Barium Sulfate)
- Dia-Proseal(Root Canal Sealing Material)
- Millimeter Marked Gutta Percha Points
- Special Taper Gutta Percha Points
- Millimeter Marked Paper Points
- Special Taper Paper Points
- Temporary Restorative Materials
- Dia-Ultrasonic (Ultrasonic Endodontic Activator) **NEW**
- Dia-Duo (Cordless Warm Vertical Compaction & Backfill Obturation Device)
- Duo-Pen (Cordless Warm Vertical Compaction Device)
- Duo-Gun (Cordless Backfill Obturation Device)

DIA-ROOT™ BIO SEALER

BIOCERAMIC ROOT CANAL SEALING MATERIAL

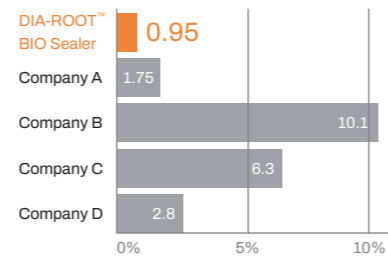
DIA-ROOT™ BIO Sealer is a bioceramic MTA-based (Calcium Silicate-based), non-shrinking root canal sealer. It is used for the permanent obturation of root canals and suitable for all obturation techniques involving Gutta-Percha.



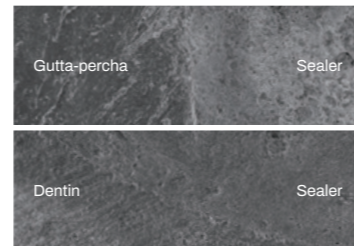
Benefits

- **High Biocompatibility**
 - Tissue healing with little inflammation
 - Produces Calcium Hydroxide and Calcium Silicate Hydrate
 - High pH for antibacterial action (pH 12)
 - Includes hard tissue regeneration in sites with microbial activity
- **Perfect Sealing Ability**
 - Superior adhesion between Gutta Percha Points and Dentin
 - No Shrinkage or expansion
- **Low Solubility**
 - Low Solubility(0.95%) to maintain an excellent sealing effect inside the root canal
- **Optimal Flowability**
 - Flow rate of 22mm : Completes apical sealing
 - High flow rate and low film thickness ensures easy penetration into lateral and accessory canals
- **Pre-mixed for easy, convenient and fast application**
 - Ready to use formula in a prefilled and injectable syringe
 - Adequate setting time (6 hours)
- **Easy to store**
 - Can be stored over 6 months after use
 - Does not harden easily and reduce waste of materials to a minimum

Solubility

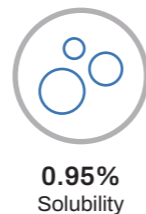
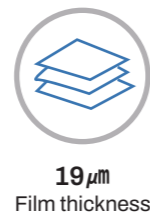


Excellent Adhesion Property



Package

- **ITEM #1003-701**
 - 1 syringe x 2g
 - 20 Disposable tips
 - 1 Silicon cap

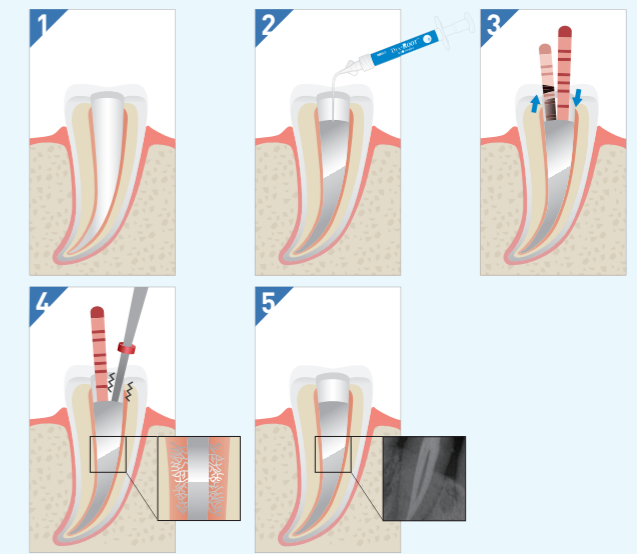


DIA-ROOT™ BIO SEALER

TECHNIC GUIDE

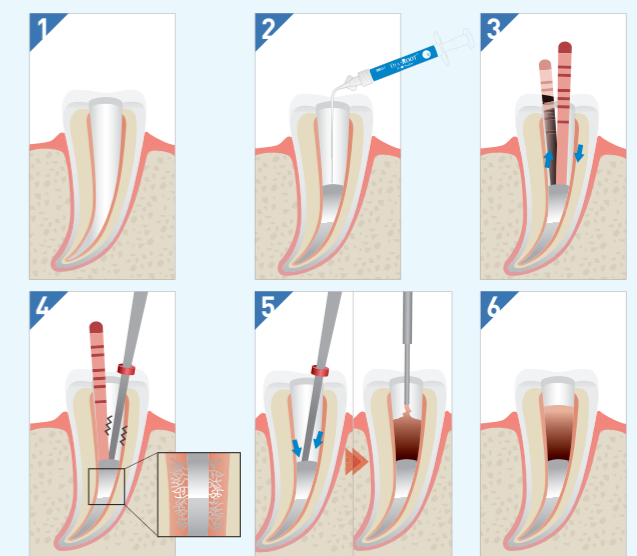
SINGLE CONE TECHNIC

1. Prepare the root canal, cleaned and dried.
2. Apply DIA-ROOT™ BIO SEALER by the coronal third of the canal.
3. Fill the root canal with selected Gutta Percha cones and lightly pump the Gutta Percha cones up to the root canal to fill up the Apex.
4. Cut the master cone at the desired level with **DUO-PEN** and remove the surplus sealer from the root canal.
5. Complete root canal treatment.



TRADITIONAL TECHNIC WITH ROOT CANAL OBTURATION DEVICE

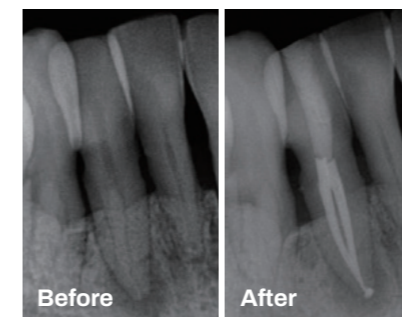
1. Prepare the root canal, cleaned and dried.
2. Apply DIA-ROOT™ BIO SEALER by the middle third of the canal.
3. Fill the root canal with selected Gutta Percha cones and lightly pump the Gutta Percha cones up to the root canal to fill up the Apex.
4. Cut the master cone at the desired level with **DUO-PEN**.
5. Condense the Gutta Percha cones with **DUO-PEN** and fill melted Gutta Percha in the rest of canal by **DUO-GUN**.
6. Complete root canal treatment.



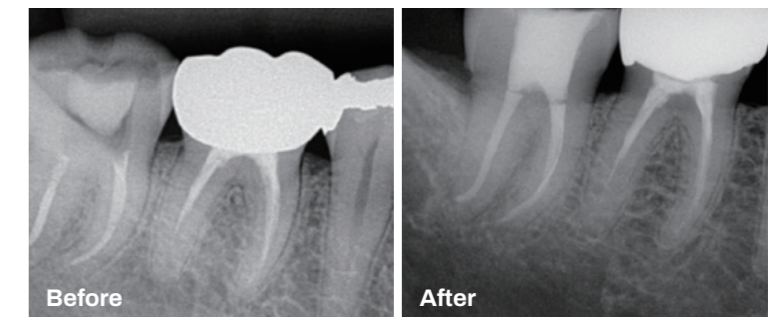
CLINICAL CASES

Complete root canal sealing without tissue irritation

Case 1



Case 2



DIA-ROOT™ BIO MTA

MINERAL TRIOXIDE AGGREGATE

DIA-ROOT™ BIO MTA is a root repair materials with excellent biocompatibility and offers distinct advantages for root canal repair procedures. And it restores the damaged areas root canal to normal function and appearance, quickly and efficiently. It does not produce any adverse side effect on microcirculation of the connective tissue and its bioactive properties promote healing.

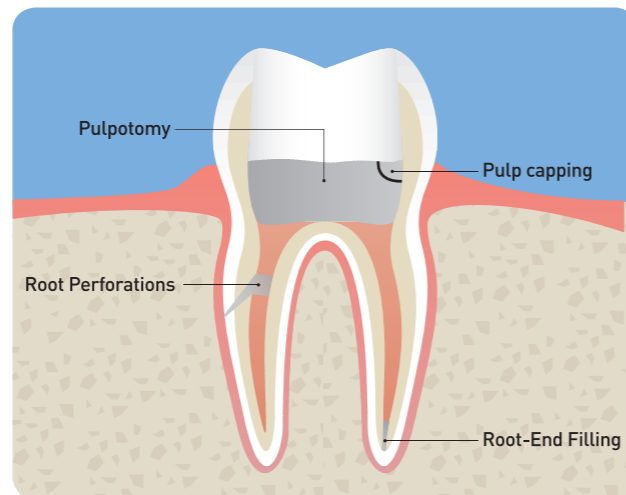
Benefits

- Good Biocompatibility
- Resists washout
- Easy Handling Properties
- Outstanding Sealing Capabilities
- White powder is ideal for Anterior teeth
- Antibacterial Effect (pH 12)



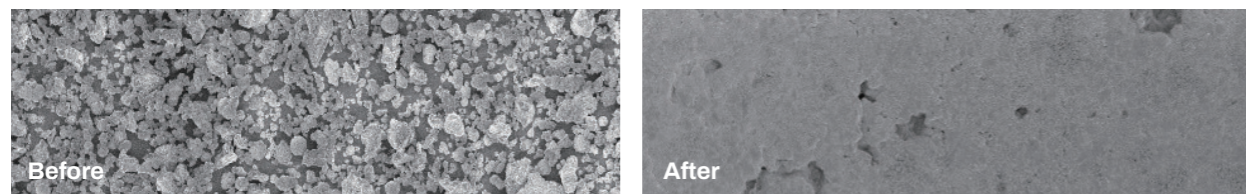
Indications

- **Pulp Capping**
When applied on the pulpal site, it creates a biocompatible sealing of the pulp. DIA-ROOT™ BIO MTA prevents the bacterial leakage with a high level of biocompatibility. It stimulates dentin bridge formation adjacent to dental pulp.
- **Root Perforations**
DIA-ROOT™ BIO MTA is ideal for treatment of perforations of root canal and furcation caused iatrogenically or by caries lesion.
- **Pulpotomy**
It creates a biocompatible seal, and replacing pulp in the chamber to prevent infection.
- **Root-End Filling**
It has excellent sealing ability to prevent the irritants in the root canal to extrude into periradicular tissues.



Package

- **ITEM #1003-601**
 - MTA Powder 0.5g
 - 1 Mixing Pad
 - 1 Spatula

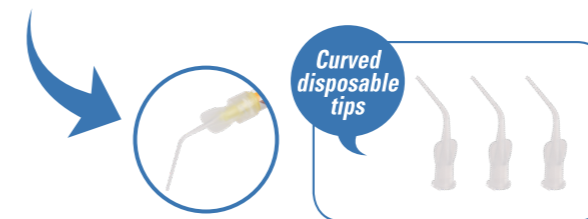
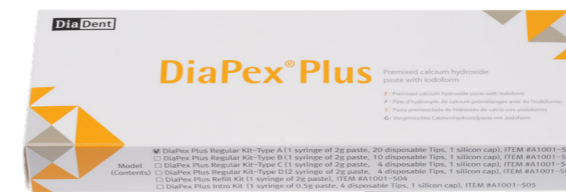


SEM pictures of after Hydration DIA-ROOT™ BIO MTA show outstanding sealing ability

DIAPEX® PLUS

CALCIUM HYDROXIDE PASTE WITH IODOFORM

- Premixed Calcium Hydroxide + Iodoform paste for root canal treatment.
- Temporary root canal filling material after a pulpectomy.
- Ideal for the treatment of infected root canal and for vital pulpotomies in deciduous teeth.



Indications

- Intracanal medicament
- Apexification
- Exudation Control
- Periapical Lesions
- Root Resorption
- Temporary root filling
- Perforations
- Under developed Pulpless Teeth

Benefits

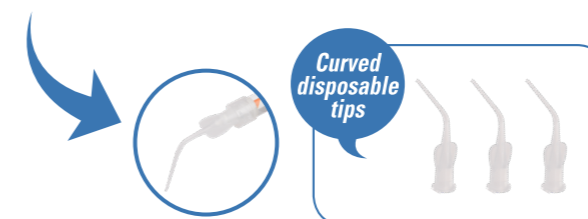
- Quiets "Hot Abscess"
- Disinfects canal
- Promotes Apexification
- Treats Traumatic Injuries
- Radiopaque
- Quick and simple application
- Antibacterial and Bacterostatic

Packages

- **ITEM #A1001-501 Regular Kit Type A**
- 2g of paste and 20 disposable tips with cap
- **ITEM #A1001-502 Regular Kit Type B**
- 2g of paste and 10 disposable tips with cap
- **ITEM #A1001-503 Regular Kit Type C**
- 2g of paste and 4 disposable tips with cap
- **ITEM #A1001-504 Refill Kit**
- 2g of paste
- **ITEM #A1001-505 Intro Kit**
- 0.5g of paste and 4 disposable tips
- **ITEM #1001-323 Clear Disposable Tips(Curved)**
- 20 disposable tips

DIAPASTE™

CALCIUM HYDROXIDE PASTE WITH BARIUM SULFATE



Characteristics

- Premixed Calcium Hydroxide + Barium Sulfate paste for root canal treatment.
- Temporary root filling.
- Root canal filling for primary teeth.
- Use after pulp extirpation treatment.
- Filling on the pulpotomy.
- Temporary Pulp Capping.

Benefits

- Water Soluble: Easy to clean and remove, reduce operative time
- Easy and quick access
- Radiopaque
- Antibacterial

Packages

- **ITEM #A1001-401 Regular Kit Type A**
- 2g of paste and 20 disposable tips with cap
- **ITEM #A1001-402 Regular Kit Type B**
- 2g of paste and 10 disposable tips with cap
- **ITEM #A1001-403 Regular Kit Type C**
- 2g of paste and 4 disposable tips with cap
- **ITEM #A1001-404 Refill Kit**
- 2g of paste
- **ITEM #A1001-405 Intro Kit**
- 0.5g of paste and 4 disposable tips
- **ITEM #1001-323 Clear Disposable Tips(Curved)**
- 20 disposable tips

DIA-PROSEAL™

ROOT CANAL SEALING MATERIAL

DIA-PROSEAL™, root canal sealer is an epoxy resin-based formula with outstanding flow characteristics.



Benefits

- The ideal root sealer with Low Shrinkage reduced gapping between the sealer and canal wall.
- Low solubility makes it resistant to breaking down over time.
- 1:1 paste to paste manual mixing system.
- Fast and Easy Preparation and Less Waste.
- Mixing and handling is very smooth.
- Excellent flow properties allow it to reach and seal lateral canals, making it especially suited to warm gutta-percha methods.
- Low risk of cytotoxicity with short setting time.
- Better biocompatibility for a solution to the sensitivity and periapical inflammation.
- High radiopacity
- Lightly coated Gutta Percha Points with a good film thickness.

Directions

- Prior to application of DIA-PROSEAL™, prepare and shape the root canal using endodontic technique.
- Remove all of debris in the root canal. And disinfect and clean the root canal with Sodium Hypochlorite or EDTA solution and dry it.
- Using DIA-PROSEAL™ in dual syringes, press the syringe and squeeze equal volume units of Base material(yellow) and Catalyst material(white) in the ratio of 1:1 on a mixing pad.
- Mix the Base material(yellow) and Catalyst material(white) with a spatula for 10~20 sec to be mixed into a ivory color completely.
- Apply only a light coating of DIA-PROSEAL™ to Gutta Percha Points(silver or titanium root canal points also) and put points into the apex slowly.
- Please check the seal by X-Ray.

Package

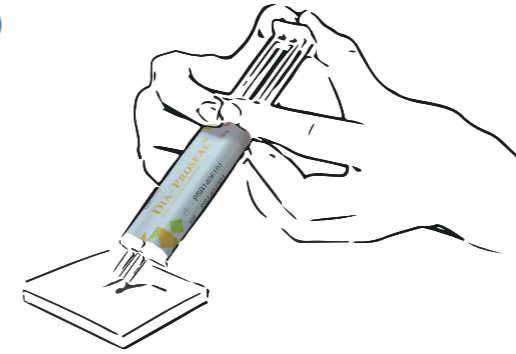
- **ITEM #1003-201**
 - 1 Syringe of 16g (Base 6.5g + Catalyst 9.5g)
 - 1 Mixing pad
 - 1 Spatula
- **ITEM #1003-202**
 - 1 Syringe of 4g
 - 1 Mixing pad
 - 1 Spatula
- **ITEM #2001-6113-Spatula for DIA-PROSEAL™**
- **ITEM #2001-6114-Mixing pad for DIA-PROSEAL™**

DIA-PROSEAL™

ROOT CANAL SEALING MATERIAL

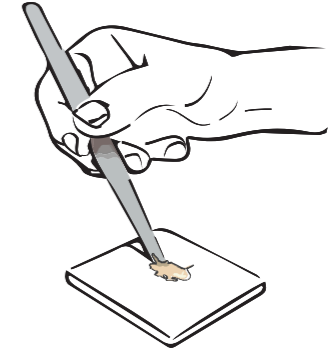
INDICATIONS

1



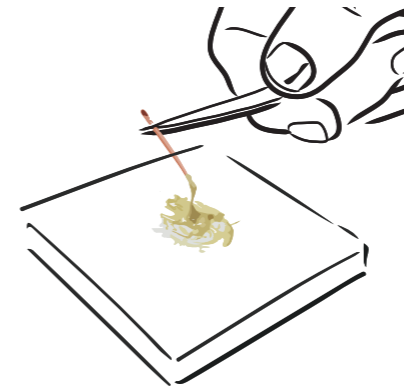
Press the syringe with two hands to apply Base and Catalyst in 1:1 on the mixing pad

2



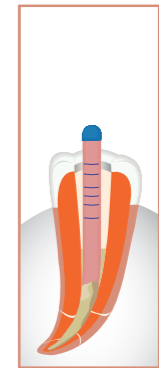
Mix Base and Catalyst for 10~20 sec with the spatula as 1:1 paste to paste manual mixing system

3



Coat Gutta Percha Points in the mixed DIA-PROSEAL™

4

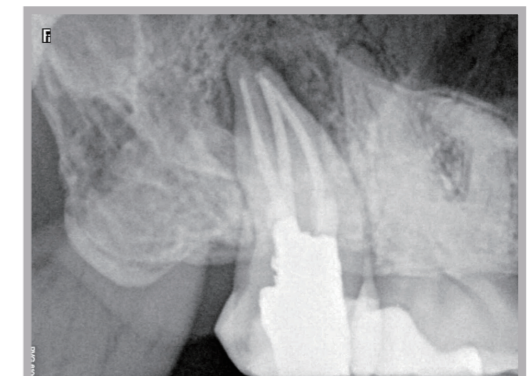


Put Gutta Percha Points into the root canal

RADIOGRAPHS



High radiopacity with DIA-PROSEAL™

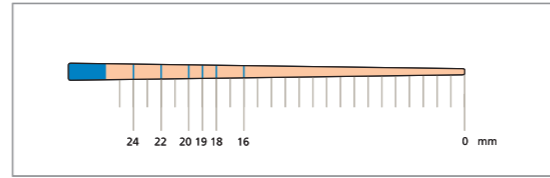


DIADENT'S MILLIMETER MARKED GUTTA PERCHA POINTS & PAPER POINTS

- All DiaDent Points are Hand Jig Rolled to exacting standards.
- They are uniformly tapered and unsurpassed for consistency in sizing.
- All Points are laser inspected to ensure the tightest tolerances surpassing ISO standards.

Millimeter Marked Gutta Percha Points

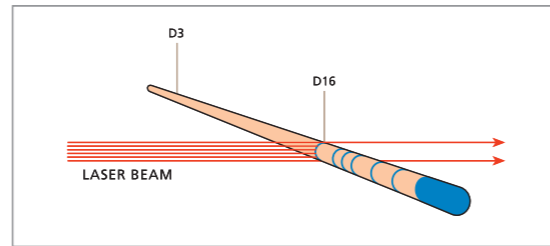
- Quick and easy method for depth measurements.
- Points with mm marking at 16mm, 18mm, 19mm, 20mm, 22mm and 24mm.
- Eliminates apex perforations which may lead to bleeding.
- Reaches the apex, completely seal the entire length of the canal.
- Save chair time with premeasured points.
- Most accurate depth measurements.



Millimeter Marked

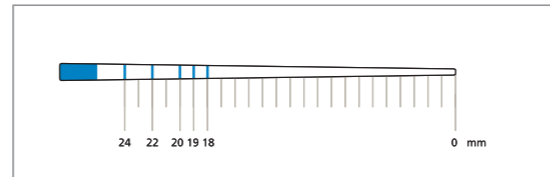
Computerized Laser Inspection System

- Each point is inspected by the laser beam.
- Using a laser beam, each DiaDent ML.029 point is individually inspected for diameters at D3 and D16.
- ISO and ADA standard requires the use of 1/100mm incremental measurement units, DiaDent uses 1/1,000mm increments



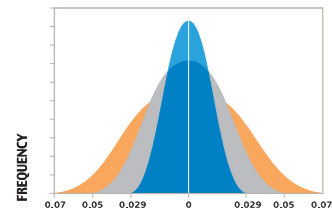
Millimeter Marked Paper Points

- Quick and easy method for depth measurements.
- Points with mm marking at 18mm, 19mm, 20mm, 22mm and 24mm.
- Eliminates apex perforations which may lead to bleeding.
- Completely drying the entire length of the canal.
- Save chair time with premeasured points.
- Most accurate depth measurements.



Millimeter Marked

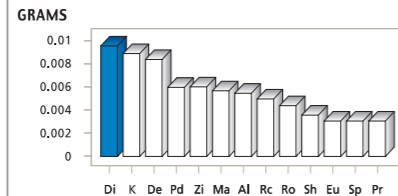
DiaDent Quality Assurance



DEVIATION FROM STANDARD (mm)

■ DIADENT ML029 SPECS
■ ISO and ADA SPECS (#10 - #25 sizes)
■ ISO and ADA SPECS (#30 - #140 sizes)

Comparative absorption of Paper Points, by Brand



JOSE PUMAROLA-SUNE, JOURNAL OF ENDODONTICS, VOL 24, NO.12, 796-798

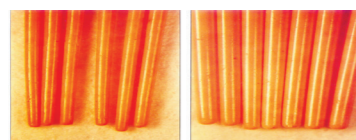
DIADENT PATENTS

- US Patent No. 6,004,133
- International Patents pending.
- European Patents No. 0964656
- United Kingdom Patents No. 0964656
- Deutsches Patents No. EP 0964656

HAND JIG ROLLED POINTS VS MACHINE ROLLED POINTS

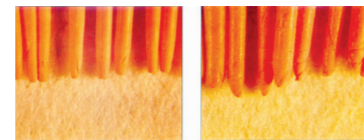
- DiaDent's method of hand rolling the points ensures the following:

DiaDent Hand Jig Rolled Gutta Percha Points



- Consistent, Uniform taper
- Smooth, Rounded Bullet shaped tips
- Readily conforms to shape of canal
- Greater likelihood of optimal apical seal

Machine Rolled Gutta Percha Points



- Inconsistent taper
- Uneven, Unpredictably shaped tips
- Overlapping of material of the tips
- Reduced likelihood of optimal apical seal

ML.029

MILLIMETER MARKED + LASER INSPECTED GUTTA PERCHA POINTS



ML.029

- M - Millimeter Marked
- L - Laser Inspected
- .029 - Diameter Tolerance

Available Sizes

Size	SP-60
XF	ML102-S601
FF	ML102-S602
MF	ML102-S603
F	ML102-S604
FM	ML102-S605
M	ML102-S606
ML	ML102-S607
L	ML102-S608
XL	ML102-S609
XF/M	ML102-S691

(Pkg. of 100)

Package Information

- **SP-60 Slide Package**
one hand slide open lid
Box dimension:
70×13×45mm(W×H×D)

Sizes vs Color Chart

15	45	90	XF	ML
20	50	100	FF	L
25	55	110	MF	XL
30	60	120	F	08
35	70	130	FM	10
40	80	140	M	

COLOR CODED GUTTA PERCHA POINTS



Available Sizes

Size	SP-60
XF	102-S601
FF	102-S602
MF	102-S603
F	102-S604
FM	102-S605
M	102-S606
ML	102-S607
L	102-S608
XL	102-S609
XF/M	102-S691

(Pkg. of 100)

Package Information

- **SP-60 Slide Package**
one hand slide open lid
Box dimension:
70×13×45mm(W×H×D)

Sizes vs Color Chart

15	45	90	XF	ML
20	50	100	FF	L
25	55	110	MF	XL
30	60	120	F	08
35	70	130	FM	10
40	80	140	M	

Size	SP-60
#8	101-S601
#10	101-S602
#15	101-S603
#20	101-S604
#25	101-S605
#30	101-S606
#35	101-S607
#40	101-S608
#45	101-S609
#50	101-S610
#55	101-S611
#60	101-S612
#70	101-S613
#80	101-S614
#15/40	101-S691
#45/80	101-S692
#90/140	101-S693

(Pkg. of 120)

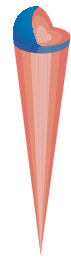
DIA-PROISO.04/.06 PLUS MILLIMETER MARKED + LASER INSPECTED SPECIAL TAPER GUTTA PERCHA POINTS

- Millimeter Marked Special Taper Gutta Percha Points.
- Designed to be used to complement for Profile[®], Hero[®] & K3[®] files.
- Available in taper .04 & .06

Available Sizes

Size	Dia-ProISO .04 Plus	Dia-ProISO .06 Plus
	SP-60	SP-60
#15	ML158-S603	ML159-S603
#20	ML158-S604	ML159-S604
#25	ML158-S605	ML159-S605
#30	ML158-S606	ML159-S606
#35	ML158-S607	ML159-S607
#40	ML158-S608	ML159-S608
#45	ML158-S609	ML159-S609
#50	ML158-S610	ML159-S610
#55	ML158-S611	ML159-S611
#60	ML158-S612	ML159-S612
#70	ML158-S613	ML159-S613
#80	ML158-S614	ML159-S614
#15/40	ML158-S691	ML159-S691
#45/80	ML158-S692	ML159-S692

(Pkg. of 60)



- 6% Dia-ProISO .06 Plus
- 4% Dia-ProISO .04 Plus
- 2% ML029 / MMPP



DIA-PROT PLUS



- Designed to be used to complement DIA-PT[™] File, Dia-X File Protaper[®] Files.
- Millimeter Marked Points
- One hand slide open lid

Size	ITEM No.
#F1	MLP150-S601
#F2	MLP150-S602
#F3	MLP150-S603
#F4	MLP150-S604
#F5	MLP150-S605
#F1/F3	MLP150-S691
#F4/F5	MLP150-S692
#F1/F5	MLP150-S693

(Pkg. of 60)

DIA-PROT NEXT



- Designed to be used to complement Protaper[®] Next Files.
- Millimeter Marked Points
- One hand slide open lid

Size	ITEM No.
#X2	ML167-S602
#X3	ML167-S603
#X4	ML167-S604
#X5	ML167-S605
#X2/X5	ML167-S691
#X2/X3	ML167-S692

(Pkg. of 60)

DIA-PRO R



- Designed to be used to complement Reciproc[®] Files.
- Millimeter Marked Points

Size	ITEM No.
#25	ML164-S605
#40	ML164-S608
#50	ML164-S610
#Asst (25/40/50)	ML164-S691

(Pkg. of 60)

DIA-PRO W GOLD



- Designed to be used to complement Wave One[®] Gold Files.
- Millimeter Marked Points
- One hand slide open lid

Size	ITEM No.
#Small	ML168-S601
#Primary	ML168-S602
#Medium	ML168-S603
#Large	ML168-S604
#Asst (Small/Primary/Medium/Large)	ML168-S691

(Pkg. of 60)

DIA-PRO W



- Designed to be used to complement Wave One[®] Files.
- Millimeter Marked Points
- One hand slide open lid

Size	ITEM No.
#Small	ML165-S601
#Primary	ML165-S602
#Large	ML165-S603
#Asst (Small/Primary/Large)	ML165-S691

(Pkg. of 60)

FEATHERED TIP



- Designed to be used as auxiliary points to the master cone technique
- Extra fine taper
- Hand Jig Rolled

Size	ITEM No.
#XF	126-601
#FF	126-602
#MF	126-603
#F	126-604
#FM	126-605
#M	126-606
#ML	126-607
#L	126-608
#XF/M	126-691

(Pkg. of 100)

MMPP

MILLIMETER MARKED PAPER POINTS



- MMPP is marked to provide preliminary guidance in measuring the root canal depth before proceeding clinically with the application of the Gutta Percha Points.
- These points are highly absorbent and color coded to identify ISO tip sizes.

Available Sizes

Size	SP-60
XXF	MP202-S601
XF	MP202-S602
F	MP202-S603
M	MP202-S604
C	MP202-S605
XC	MP202-S606
XXF/XC	MP202-S691

(Pkg. of 200)

Package Information

• **P-33 Cell Package**

Points remain sterile until opened
Box dimension: 78×19×50mm(W×H×D)

• **SP-60 Slide Package**

One hand slide open lid
Box dimension: 70×13×45mm(W×H×D)

Contents

Size	P-33	SP-60
#08-80	200pcs	200pcs
#90-140	200pcs	120pcs

Sizes vs Color Chart

8	10		
15	45	90	XXF
20	50	100	XF
25	55	110	F
30	60	120	M
35	70	130	C
40	80	140	XC

COLOR CODED PAPER POINTS

- Made from specially formulated highly absorbent papers.
- Color Coded.
- Hand Jig rolled to ensure Superior absorbency.



Available Sizes

Size	SP-60
XXF	202-S601
XF	202-S602
F	202-S603
M	202-S604
C	202-S605
XC	202-S606
XXF/XC	202-S691

(Pkg. of 200)

Contents

Size	SP-60
#08-80	200pcs
#90-140	120pcs

Size	SP-60
#8	201-S601
#10	201-S602
#15	201-S603
#20	201-S604
#25	201-S605
#30	201-S606
#35	201-S607
#40	201-S608
#45	201-S609
#50	201-S610
#55	201-S611
#60	201-S612
#70	201-S613
#80	201-S614
#15/40	201-S691
#45/80	201-S692
#90/140	201-S693

Package Information

• **SP-60 Slide Package**

One hand slide open lid
Box dimension:
70×13×45mm(W×H×D)

Sizes vs Color Chart

8	10		
15	45	90	XXF
20	50	100	XF
25	55	110	F
30	60	120	M
35	70	130	C
40	80	140	XC

DIA-PROISO .04/.06 PLUS MILLIMETER MARKED SPECIAL TAPER PAPER POINTS

- Millimeter marked Special Taper Absorbency Paper Points.
- Designed to be used for drying and cleaning the canals prepared with Profile[®], Hero[®] & K3[®] files.
- Available in .04 & .06 taper.



Available Sizes

Size	Dia-ProISO .04 Plus	Dia-ProISO .06 Plus
	SP-60	SP-60
#15	MP258-S603	MP259-S603
#20	MP258-S604	MP259-S604
#25	MP258-S605	MP259-S605
#30	MP258-S606	MP259-S606
#35	MP258-S607	MP259-S607
#40	MP258-S608	MP259-S608
#45	MP258-S609	MP259-S609
#50	MP258-S610	MP259-S610
#55	MP258-S611	MP259-S611
#60	MP258-S612	MP259-S612
#70	MP258-S613	MP259-S613
#80	MP258-S614	MP259-S614
#15/40	MP258-S691	MP259-S691
#45/80	MP258-S692	MP259-S692

(Pkg. of 100)

DIA-PROISO .04/.06 PLUS IN THE CELL PACKAGE

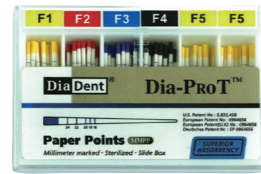


- Points remain sterile until opened

Cell pkg	Dia-ProISO.04 Plus	Dia-ProISO.06 Plus
#15	MP 258-703	MP 259-703
#20	MP 258-704	MP 259-704
#25	MP 258-705	MP 259-705
#30	MP 258-706	MP 259-706
#35	MP 258-707	MP 259-707
#40	MP 258-708	MP 259-708
#15/40	MP 258-791	MP 259-791

(Pkg. of 120)

DIA-PROT



- Designed to be used to complement DIA-PT[™] File, Dia-X File, Protaper[®] Files.
- Millimeter Marked Points
- One hand slide open lid

Size	ITEM No.
#F1	MP250-S601
#F2	MP250-S602
#F3	MP250-S603
#F4	MP250-S604
#F5	MP250-S605
#F1/F3	MP 250-S691
#F4/F5	MP 250-S692
#F1/F5	MP 250-S693

(Pkg. of 100)

DIA-PROT NEXT

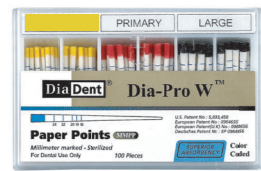


- Designed to be used to complement Protaper[®] Next Files.
- Millimeter Marked Points
- One hand slide open lid

Size	ITEM No.
#X2	MP267-S602
#X3	MP267-S603
#X4	MP267-S604
#X5	MP267-S605
#X2/X5	MP267-S691
#X2/X3	MP267-S692

(Pkg. of 100)

DIA-PRO W

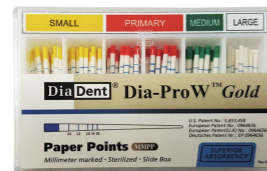


- Designed to be used to complement Wave One[®] Files.
- Millimeter Marked Points
- One hand slide open lid

Size	ITEM No.
#Small	MP265-S601
#Primary	MP265-S602
#Large	MP265-S603
#Asst (Small/Primary/Large)	MP265-S691

(Pkg. of 100)

DIA-PRO W GOLD

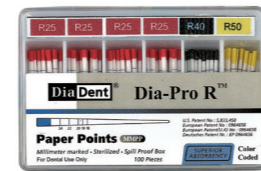


- Designed to be used to complement Wave One[®] Gold Files.
- Millimeter Marked Points
- One hand slide open lid

Size	ITEM No.
#Small	MP268-S601
#Primary	MP268-S602
#Medium	MP268-S603
#Large	MP268-S604
#Asst (Small/Primary/Medium/Large)	MP268-S691

(Pkg. of 100)

DIA-PRO R



- Designed to be used to complement RECIPROC[®] Files.
- Millimeter Marked Points

Size	ITEM No.
#25	MP264-S605
#40	MP264-S608
#50	MP264-S610
#Asst(25/40/50)	MP264-S691

(Pkg. of 100)

DIATEMP[™] A VISIBLE, LIGHT CURED TEMPORARY RESTORATIVE MATERIAL

DiaTemp is a high-viscosity light cured restorative material for temporary and intermediate restorations for inlays and onlays. It can also be used to reline prefabricated crowns and bridges or to seal implant screw channels.



Packages

- 3 Syringes of 3g
- ITEM #A2003-1101 Blue
- ITEM #A2003-1201 Yellow

Indications

- Temporary and intermediate restorations for inlays and onlays
- Sealing of implant screw access openings
- Relining of prefabricated crowns and bridges

Features

- Easy application: Convenient syringe dispense system with no mixing required
- Elastic: quick and simple removal in one piece
- High wear resistance with mechanical strength
- Sets fast with excellent adhesion
- Available in two colors: Yellow is ideal for anterior teeth and Blue color is ideal for posterior teeth
- Blue color is ideal for contrast with implant screws



DIATEMP[™] FLOW LIGHT CURED FLOWABLE TEMPORARY RESTORATIVE MATERIAL

DiaTemp Flow is a low-viscosity flowable light cured material for temporary and intermediate restorations of inlays and onlays. It can also be used to reline crowns and bridges.



Packages

- 5 Syringes of 1.8g and 10 disposable tips
- ITEM #A2003-2101 Blue
- ITEM #A2003-2201 Yellow

Indications

- Temporary and intermediate restorations for inlays and onlays
- Sealing of implant screw access openings
- Relining of prefabricated crowns and bridges
- Block out material for retentive areas in the dental arch (before taking impressions)
- Temporary filling of abutment apertures
- Protective gingival margin coverage

Features

- Temporary restorations of prepared cavity
- Low viscosity: excellent flowability allows fast and easy application to various shapes of teeth and especially ideal for deep inlays
- Great for implant access holes
- Elastic: quick and simple removal in one piece
- Good adhesion for tight sealing of margins
- Strong and durable: high resistance to external force



E-TEMP HYDRAULIC TEMPORARY RESTORATIVE MATERIAL

Temporary restorative material for standard cavities and post-endodontic treatments.



Benefits

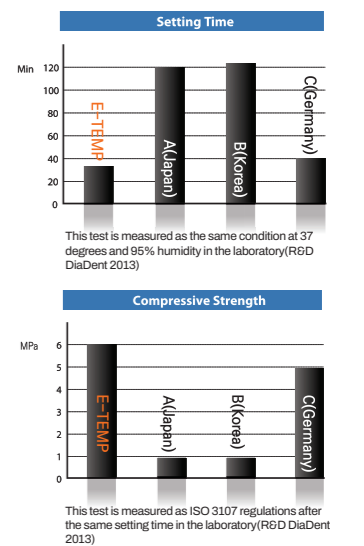
- Temporary Filling Material for Standard Cavities.
- Easily setting initiated by saliva.
- Excellent adaptability.
- Easy to remove.
- Adheres to dentine, expands slightly during the setting and hardens rapidly to ensure hermetical seal.
- Improved the mechanical properties for the quick temporary filling.

Directions

- Prepare and dry the cavity with a small cotton pellet.
- Transfer E-TEMP to the cavity using a suitable instrument and form the contour. In the case of occlusal Class I, the patient bites down on the surface, and then form the contour.
- After the patient close the mouth, E-TEMP will harden within 35 minutes. Recommend the patient to avoid the strong pressure or abrasion for at least 2 hours.

Packages

- ITEM #2004-1001 30g



DIA-ULTRASONIC

ULTRASONIC ENDODONTIC ACTIVATOR

NEW

DIA-ULTRASONIC is a compact and easy-to-use cordless ultrasonic activator. Effective irrigant delivery and agitation are essential for successful endodontic treatment. Dia-Ultrasonic uses two different ultrasonic frequencies to create sufficient acoustical streaming and cavitation that can effectively eliminate vapor lock. The dual-ultrasonic frequency also helps to clean, penetrate, and irrigate the root canals more precisely than single-frequency devices. With its durable, powerful, and flexible Ni-Ti tips, Dia-Ultrasonic can safely and efficiently handle curved and narrow canals. Achieve reliable and effective irrigation and disinfection with Dia-Ultrasonic.

Features

- **Dual-Frequency & Double-Satisfaction**
Dual-Ultrasonic frequency (30 KHz and 45 KHz) provides significantly improved debridement of the root canal system and improved penetration of irrigants into dentinal tubules.
- **Flexible & Strong Tip**
The flexible and strong tip can adapt to various canal shapes with low risk of fracture.
- **Easy-to-use & Compact**
Cordless, compact, and ergonomic design allows increased accessibility.
- **Fast-Charging & Long-Lasting**
A fully charged 2,750 mAh rechargeable Li-ion battery can last up to 500 cycles. It only takes 3.5 hours to charge it fully.

Benefits

- **Dual-Ultrasonic Frequency**
Dia-Ultrasonic is featured with 30KHz band & 45KHz band of dual-ultrasonic frequency. Dual frequency effectively prepares root canals and unplugs dentinal tubules.
- **Specialized Ni-Ti Tip**
The specialized Dia-Ultrasonic Nickel-Titanium tip is durable and fracture resistant. Small and flexible 31G (0.25mm) (#25/.02) tip can access any difficult-to-navigate root canals. Dia-Ultrasonic's NiTi tip is heat-treated and 10 times more durable than other tips.



Technique guide

- 1) **Tip Installation & Operation**
Insert the wrench into the Tip joint. Turn (clockwise) within the range of the wrench's maximum operating angle (about 25°). Press the operation button on the handpiece for 1 second to power on the device. Press the button again to operate the device.
- 2) **Irrigation**
Move Ultrasonic Tip up and down 2-3mm vertically, maintaining a distance of 2mm from working length into the root canal filled with cleaning agent/irrigation solution (NaOCl, EDTA, etc.).
- 3) **Dual-Ultrasonic Frequency**
Device operates at 30KHz for the first 10 seconds and then automatically converts to 45KHz for 5 seconds.
- 4) **End of Operation**
Activate the irrigation solution with the device 2-3 times for optimal result. Suction out any remaining debris from the canals.

- *Precautions**
- The wrench is designed to move only within a maximum of about 25°. Do not overtighten.
 - Avoid using the device in severely curved canals due to the risk of Ultrasonic Tip fracture.
 - Avoid hitting the Ultrasonic Tip against the root canal wall.

Packages

- **ITEM #4009-1001 Dia-Ultrasonic Regular Kit**
 - Handpiece & Charger
 - Accessories : Ultrasonic Tips (2ea/box), Wrench, Adapter & Power Cord

Accessories

- **ITEM #4009-1110 Handpiece**
- **ITEM #4009-1120 Charger**
- **ITEM #4009-1130 Ultrasonic Tips (2ea/box)**
- **ITEM #4009-1140 Wrench**
- **ITEM #4009-1150 Battery**
- **ITEM #4009-1160 Adapter**
- **ITEM #4009-1170 Power Cord**



DIA-DUO

CORDLESS WARM VERTICAL COMPACTION & BACKFILL OBTURATION DEVICE

Dia-Duo is new developed Cordless Obturation System included Duo-Pen warm vertical compaction device and Duo-Gun backfill obturation device. Duo-Pen offers excellent warm vertical compaction with quick heating tip. Duo-Gun with quick heating system allows the fast and perfect obturation delivery. Duo-Gun and Duo-Pen are located in one charger.

Packages

- **ITEM #4007-2000 Regular Kit**
 - Duo-Gun Handpiece, Duo-Pen Handpiece & Duo-Charger
 - Accessories: Heating Condenser #.04-50, Heating Condenser #.06-50, Duo-Pen Battery, Disposable Sheaths (200ea/Box) GP Obturation Tip(23G, 4ea), Gutta Percha Obturator (100ea), Duo-Gun Battery, Safety Cap(2ea), Plunger set, Plunger O-Ring Assembly(2ea), Multi Tool, Scrubbing Brush, Power Adapter, AC Power Cord

Accessories

- **ITEM #4007-2010 Duo-Gun Handpiece**
 - **ITEM #4007-2020 Duo-Pen Handpiece**
 - **ITEM #4007-2030 Duo-Charger**
 - **ITEM #4007-2080 Duo-Gun Battery**
 - **ITEM #4007-2090 Duo-Pen Battery**
- * Go to Page 22 & 23 to find all of Accessories.



DUO-PEN CORDLESS WARM VERTICAL COMPACTION DEVICE

Duo-Pen is Cordless Warm Vertical Compaction Device and also Duo-Pen has the optimum functionality and quality and is full proven effective for the downpack obturation system.

Techniques

- **Softening** the root canal filling material (Gutta Percha Points) during root canal treatment
- **Spreading** the root canal filling material (Gutta Percha Points) laterally and vertically
- **Cutting** the root canal filling material (Gutta Percha Points)
- **Compacting** the root canal filling material (Gutta Percha Points) using heat

Features

- Excellent result with warm and vertical compaction for all canals including lateral canals. Duo-Pen offers reliable results with tightly sealed root canals
- Cordless, ergonomic and lightweight design
- Quick heating tip reaches high level of temperature within one (1) second to save treatment time
- Display in the handpiece shows the remaining battery power, error and setting temperature
- The effective temperature control prevents the pen tip from burning out
- Duo-Pen handpiece automatically recognizes the size of tip
- Color-coded heating condensers are available in various sizes (#.04-40, .04-45, .04-50, .06-50, .08-55) for easy identification
- Three temperature settings (170°C, 200°C, 230°C)

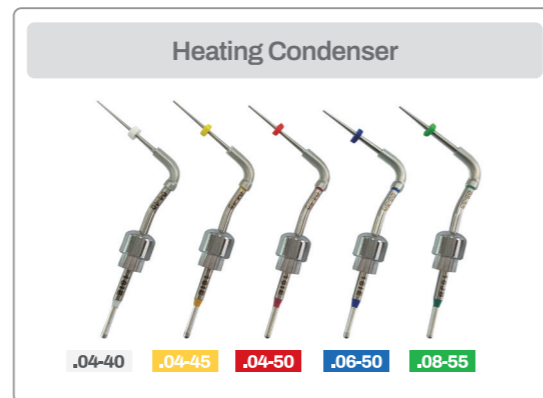


Packages

- **ITEM #4007-2002 Regular Kit**
 - Duo-Pen Handpiece & Charger
 - Accessories: Heating Condenser #.04-50, Heating Condenser #.06-50, Disposable Sheaths (200ea/Box), Power Adapter, AC Power Cord

Accessories

- ITEM #4007-2020 Handpiece
- ITEM #4007-2032 Charger
- ITEM #4007-2070 Heating Condenser(.04-40) 1ea
- ITEM #4007-2071 Heating Condenser(.04-45) 1ea
- ITEM #4007-2072 Heating Condenser(.04-50) 1ea
- ITEM #4007-2073 Heating Condenser(.06-50) 1ea
- ITEM #4007-2074 Heating Condenser(.08-55) 1ea
- ITEM #4007-2075 Heating Condenser(.04-50/.06-50) 1ea each
- ITEM #4007-2090 Battery
- ITEM #4007-2270 Disposable Sheath(200ea/box)
- ITEM #4007-2280 Power Adapter
- ITEM #4007-2287 AC Power Cord



DUO-GUN CORDLESS BACKFILL OBTURATION DEVICE

Duo-Gun is Cordless Obturation System Device, Duo-Gun offers fast and easy obturation delivery. With this effective obturation system and technique, optimum results are achieved.

Features

- Cordless and Compact design allows complete freedom of movement
- Reliable Gutta Percha filling to the desired level without delay
- Variable Temperature settings (140°C, 170°C, 200°C): precise control of obturation flow
- Quick heating system: Temperature reaches 200°C within 15 seconds
- Fast and continuous flow of filling tightly seals the canal
- Left-handed person can push on/off button easily, both sides of handpiece have the power button
- Both displays of Handpiece show the remaining battery power, error and setting temperature
- The ergonomic design enables the obturation with a minimum input of force
- Durable heater is installed to minimize minor troubles
- Maintain the stable temperature during the operation with the accurate temperature control system

Packages

- **ITEM #4007-2001 Regular Kit**
 - Duo-Gun Handpiece & Charger
 - Accessories: GP Obturation Tips (23G, 4ea), Plunger Set, Multi Tool (1ea), Safety Caps (2ea), Gutta Percha Obturator (100ea), Plunger O-ring Assembly (2ea), Scrubbing Brush, Battery, Power Adapter, AC Power Cord



Accessories

- ITEM #4007-2010 Handpiece
- ITEM #4007-2031 Charger
- ITEM #4007-2080 Battery
- ITEM #4007-2120 GP Obturation Tip(23G, 4ea)
- ITEM #4007-2121 GP Obturation Tip(25G, 4ea)
- ITEM #4007-2130 Safety Cap (2ea)
- ITEM #4007-2140 Plunger Set
- ITEM #4007-2150 Plunger O-Ring Assembly (2ea)
- ITEM #4007-2160 Multi Tool (1ea)
- ITEM #4007-2161 Scrubbing Brush (1ea)
- ITEM #4007-2280 Power Adapter
- ITEM #4007-2287 AC Power Cord
- ITEM #181-101 Gutta Percha Obturator (Medium type, 100ea)

GUTTA PERCHA OBTURATOR

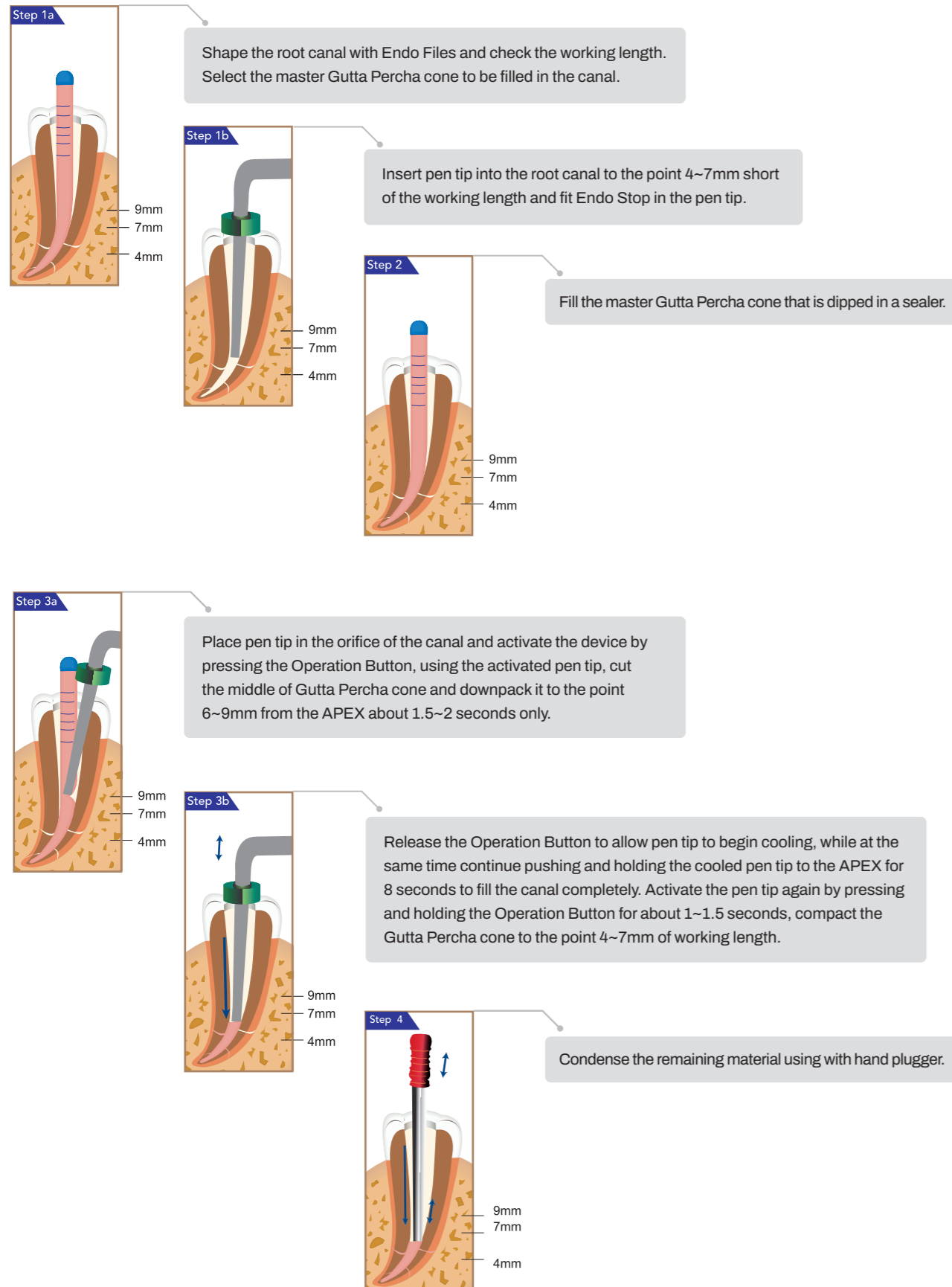


- **ITEM #181-101 Medium type**
 - Designed to use with Duo-Gun.
 - Specially formulated Gutta Percha with excellent flowing characteristics.
 - Easy to heat
 - Pkg. of 100



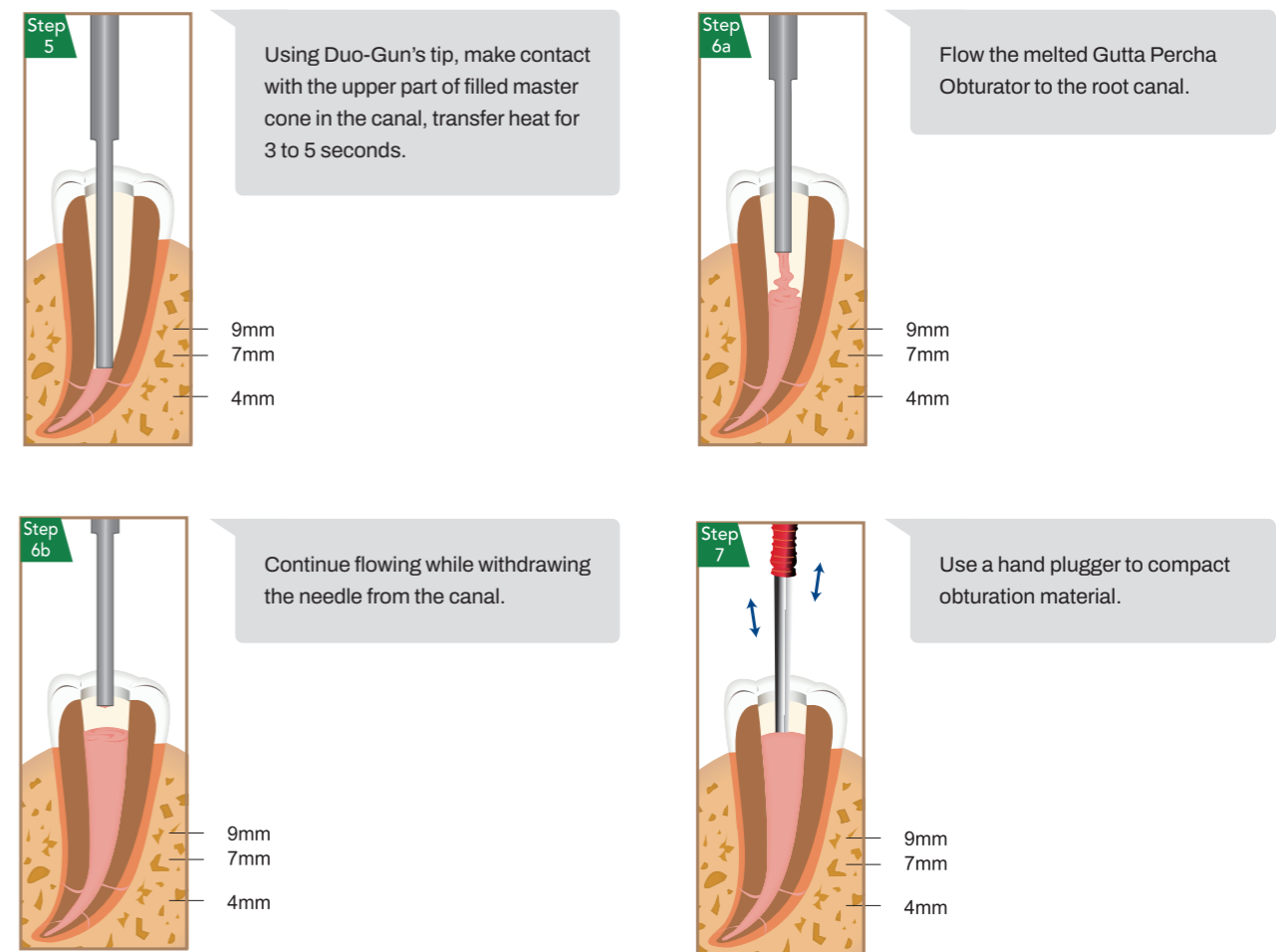
ROOT CANAL OBTURATION TECHNICAL SEQUENCE

DOWNPACK OBTURATING WITH DUO-PEN

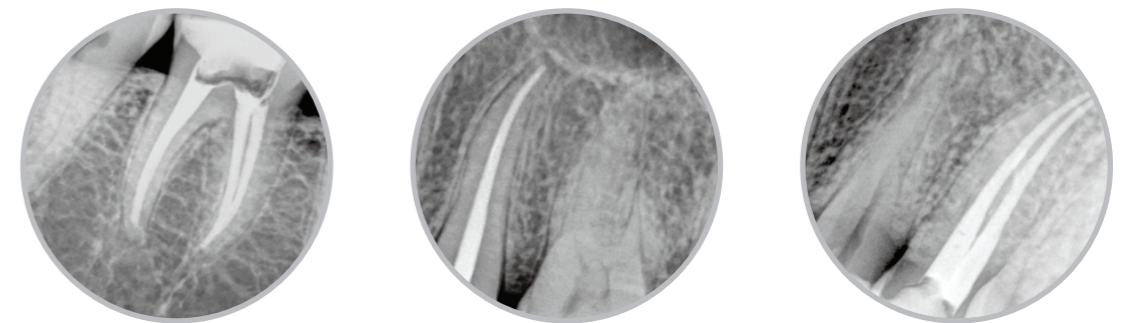


ROOT CANAL OBTURATION TECHNICAL SEQUENCE

BACKFILL OBTURATING WITH DUO-GUN



RADIOGRAPHS



Perfect and tightly sealed root canals after the root canal warm obturation technique with Duo-Gun & Duo-Pen.

DIAFIL™ A LIGHT CURE, ESTHETIC RESTORATIVE NANO HYBRID COMPOSITE RESIN

Nano hybrid composite resin for use in Anterior and Posterior restorations



Start Kit

Benefits

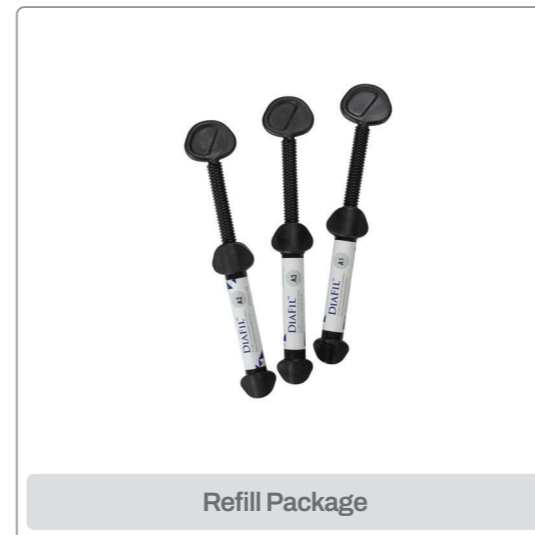
- Unique fillers offer minimum polymerization shrinkage which helps reduce stress and sensitivity on the tooth potentially
- Has excellent fracture toughness, high tensile, compressive strengths for long lasting results
- Very easy handling of acceptable viscosity and good marginal adaptation
- Remarkable color stability and superior quality of esthetics
- High Level of radiopacity

Packages

• **Start Kit**

- 5 composite resin syringes (4g)
- 1 Bottle bonding agent(5ml)
- 1 Etching gel syringe(3ml)
- Accessories: 50 brush tips, 1 brush handle, mixing well, mixing pad, 10 disposable tips, shade sheet

Set	Composite Resin Shades	ITEM No.
START KIT A SET	A1, A2, A3, A3.5, B2	A2001-1101
START KIT B SET	A2, A3, A3.5, B2, B3	A2001-1102
START KIT C SET	A1, A2, A3, A3.5, C2	A2001-1103



Refill Package

• **Refill Package**

- 1 syringe x 4g

A1	A2001-1201	B2	A2001-1207
A2	A2001-1202	B3	A2001-1208
A3	A2001-1203	C2	A2001-1210
A3.5	A2001-1204	C3	A2001-1211
A4	A2001-1205	A2O	A2001-1212
B1	A2001-1206	A3O	A2001-1213

• **Capsule Type**

- 0.25g x 20 capsules

A1	A2001-1405
A2	A2001-1401
A3	A2001-1402
A3.5	A2001-1403
B2	A2001-1404



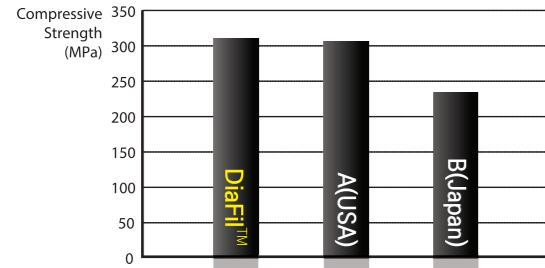
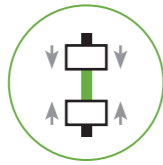
Capsule Type

COSMETIC & RESTORATIVES

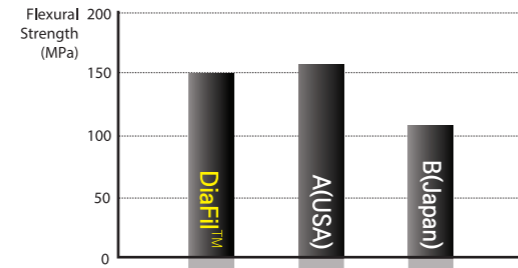
- Restorative Nano Hybrid Composite Resin
- Flowable Restorative Composite Resin
- Single Shade Bulk Fill Flowable Resin **NEW**
- Light Cure Bonding Agent
- 37% Etching Gel
- Universal Bonding Agent **NEW**
- Dual-Cure Adhesive Resin Cement **NEW**
- Temporary Cement (Non-Eugenol) **NEW**
- Cordless LED Curing Light

PHYSICAL PROPERTIES

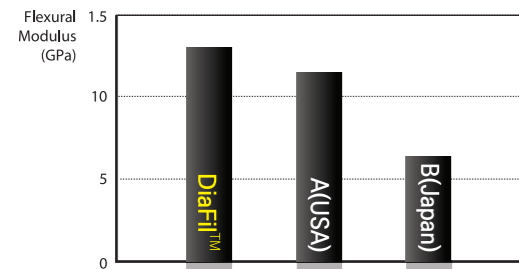
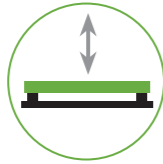
Compressive Strength



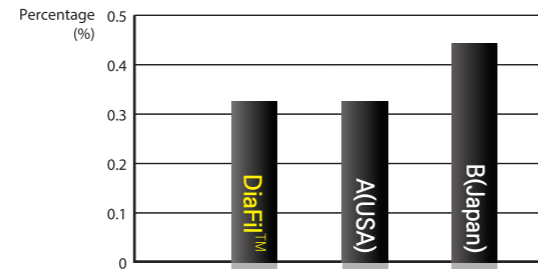
Flexural Strength



Flexural Modulus



Shrinkage



These tests are measured in the laboratory(DiaDent R&D Team 2018)

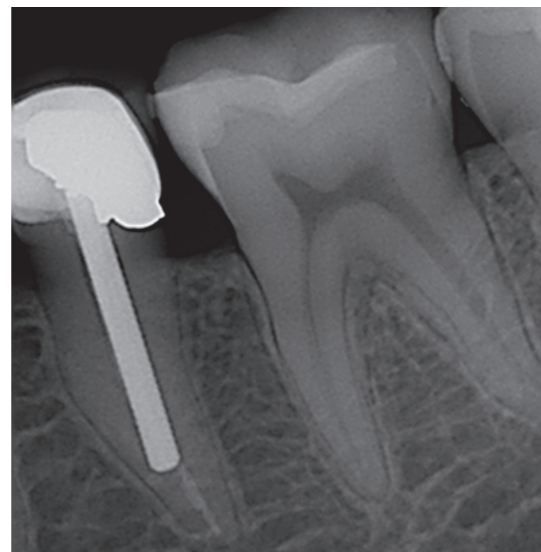
• POSTERIOR RESTORATION



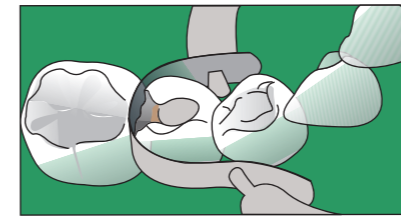
• ANTERIOR RESTORATION



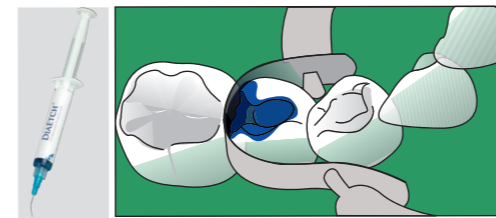
• HIGH RADIOPACITY



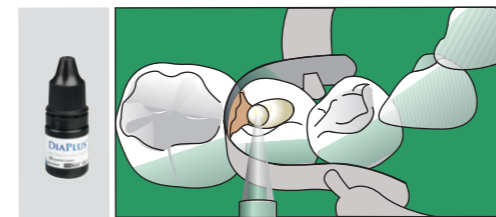
TECHNIQUE GUIDES



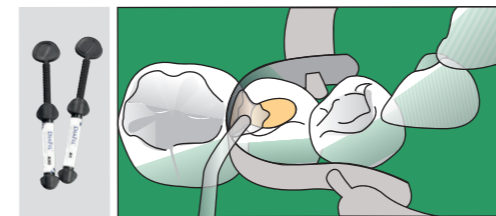
1. Prepare the tooth : Isolate the tooth with rubber dam and clean the tooth



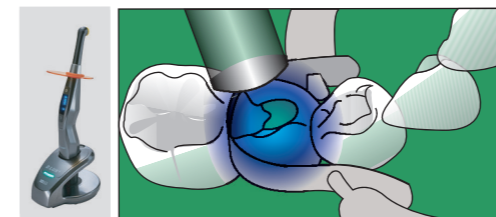
2. Etch : Apply DiaEtch(etchant) to enamel and dentin and wait 15 seconds. Rinse and blot the excess water, leaving tooth moist



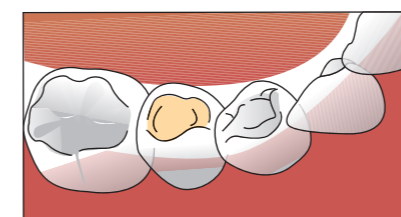
3. Bond : Apply 3 consecutive coats of DiaPlus (bonding agent) to enamel and dentin and wait 15 seconds. Dry gently for 3 seconds and light cure for 20 seconds



4. Place composite resin : Place DIAFIL™ (composite resin) in layers less than 2.0mm



5. Light Cure : Cure each increment for 20 seconds



6. Finish and Polish

DIAFIL™ FLOW

LIGHT CURE FLOWABLE RESTORATIVE COMPOSITE RESIN

Flowable composite with very easy handling and high strength



Benefits

- Enables to be used in various restorative procedures
: Class III, V and IV direct restorations
A liner for Class I, II
Pit & Fissure sealant where is required
Well suited for minimally invasive dentistry
- Excellent tensile strength and low shrinkage
- High radiopaque materials

Packages

• **Economic Package**

- Flowable Resin 2g×4 syringes
(Available shade A1, A2, A3, A3.5, B2, B3, C2, A20, A30)
- 40 disposable tips(black)
- Shade Sheet

• **Refill Package**

- Flowable Resin 2g×1 syringe
(Available shade A1, A2, A3, A3.5, B2, B3, C2, A20, A30)
- 10 disposable tips(black)

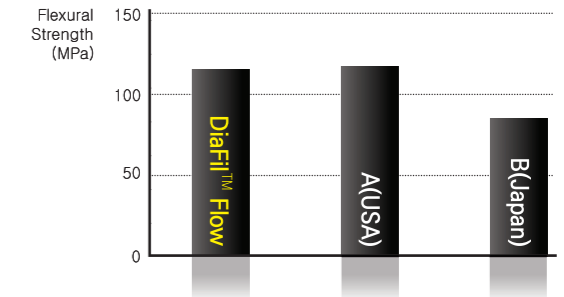
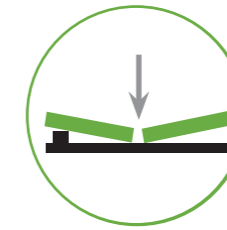


SHADE	Economic Pkg.	Refill Pkg.
A1	A2001-4101	A2001-4201
A2	A2001-4102	A2001-4202
A3	A2001-4103	A2001-4203
A3.5	A2001-4104	A2001-4204
B2	A2001-4105	A2001-4205
B3	A2001-4106	A2001-4206
C2	A2001-4107	A2001-4207
A20	A2001-4108	A2001-4208
A30	A2001-4109	A2001-4209

PHYSICAL PROPERTIES

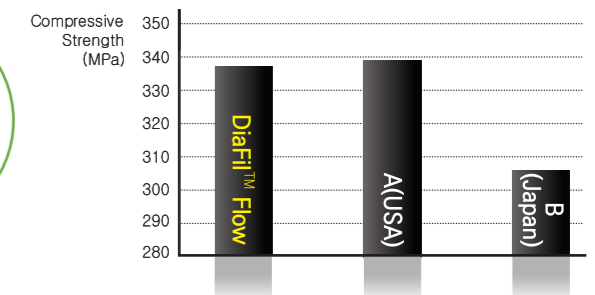
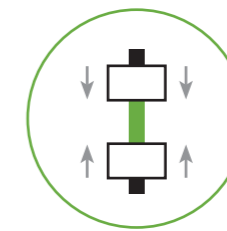
Flexural Strength

The flexural strength is measured by pressing a stick-typed experimental material. Flexural strength is the value obtained when the sample breaks, fixing both ends of sample and pressing in the middle of it. This test combines the forces found in compression and tension.



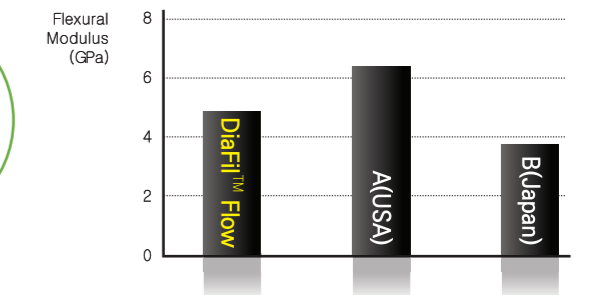
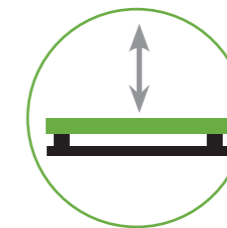
Compressive Strength

Compressive strength is particularly important because it is related with masticating forces. Rods are made of the material and simultaneous forces are applied to the opposite ends of the sample length vertically. The sample failure is a result of shear and tensile forces.



Flexural Modulus

Flexural modulus is a method of defining a material's stiffness. A low modulus indicates high flexible material.



These tests are measured in the laboratory (DiaDent R&D Team 2018)

RESTORATION WITH DIAFIL™ FLOW



DIAFIL™ BULK FLOW LIGHT CURED SINGLE SHADE BULK FILL FLOWABLE RESIN **NEW**

DiaFil Bulk Flow is a single shade bulk fill flowable resin available in all shades, designed to provide complete polymerization at 5mm depth of cure, high flexural strength and low polymerization shrinkage.



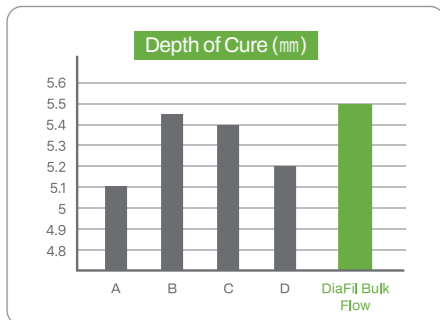
Characteristic and Benefits

- **Time Saving**
 - DiaFil Bulk Flow has one shade, reduces shade selection time for dentists
- **Simple Restorative Process**
 - DiaFil Bulk Flow provide a simple restorative process and requires no additional placement
- **No Need for Additional Capping Layer**
 - DiaFil Bulk Flow has a complete polymerization at 5mm depth of cure and has high wear resistance, no need for additional capping layer
- **Excellent Mechanical Properties**
 - DiaFil Bulk Flow has high flexural strength (123MPa) and high compressive strength (284MPa)

Indications

- Base in class I, II direct restorations
- Liner under direct restorative materials
- Repair of composite/ceramic veneers
- Restorations of small posterior cavities
- Undercut block-out
- Pit & Fissure sealant

Polymerization Properties

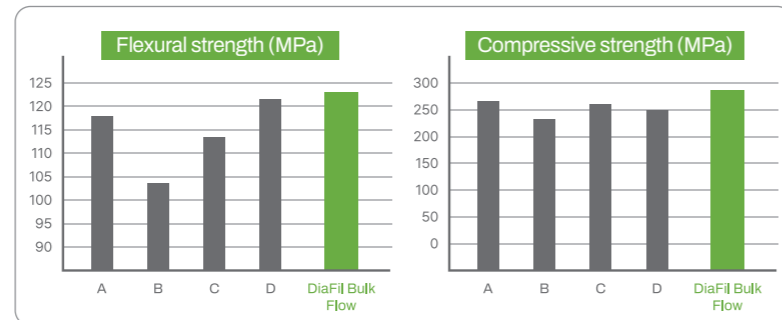


Brand Name	Depth of Cure (mm)	
	Mean	SD
A	5.1	0.21
B	5.45	0.06
C	5.4	0.26
D	5.2	0.13
DiaFil Bulk Flow	5.51	0.14

Packages

	Shade	ITEM No.	Syringe	Tip
Economic Package	Universal	A2004-6909	2g x 5 Syringes	25ea
Refill Package	Universal	A2004-6910	2g Syringe	5ea

Mechanical Properties



Brand Name	Flexural strength (MPa)		Compressive strength (MPa)	
	Mean	SD	Mean	SD
A	118	5.33	266.86	12.79
B	103.74	13.22	230.19	2.49
C	113.17	12.03	256.59	18.46
D	121.28	2.65	250.98	8.11
DiaFil Bulk Flow	123.44	1.22	284.12	3.19

DIAPLUS™ SINGLE COMPONENT BONDING AGENT

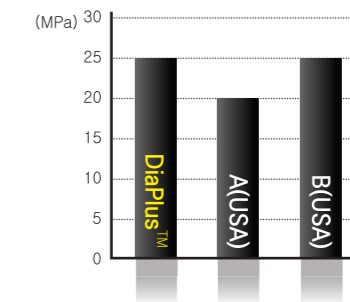
Recommended for all direct composite restorations, light-cured bonding procedures



Benefits

- High dentin, enamel bond strength performance
- Available in all classes of direct composite restoration
- Indirect restorations of Porcelain, Amalgam or Composite Repair after light curing with a minimal film thickness
- Ethanol-based bonding agent enables to maintain its exception bond strength

Shear bond Strength (MPa)



Packages

- **ITEM #A2001-2101**
 - One-bottle bonding agent (1 bottle x 5ml)

DIAETCH™ 37% A 37% ETCHING GEL PHOSPHORIC ACID

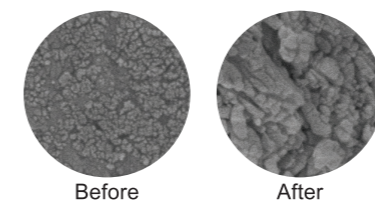
A phosphoric acid is used in etch enamel and/or dentin

Benefits

- Phosphoric acid etching of enamel and dentin with ideal thickness
- Quick and effective application to the desired place
- Enables to rinse completely and easily from the tooth surface
- High biocompatibility

Packages

- Economic Package Type A**
 - **ITEM #A2001-3101** - 5 Syringes x 5ml and 20 disposable tips
- Regular Package**
 - **ITEM #A2001-3103** - 2 Syringes x 3ml and 10 disposable tips
- Refill Package Type A**
 - **ITEM #A2001-3202** - 1 Syringe x 5ml and 5 disposable tips



(Microphotographs of premolar, X1,000)

DIA-X BOND™ UNIVERSAL

UNIVERSAL BONDING AGENT

NEW

All direct restorations:

Resin-based composite, resin-modified glass ionomers, core build-up, resin cement, etc.

All indirect restorations:

metal, zirconia, glass ceramics, alumina, etc.

Desensitization/Sealing of Tooth

Intraoral Repair

chipped porcelain, additions to direct restorations, etc.

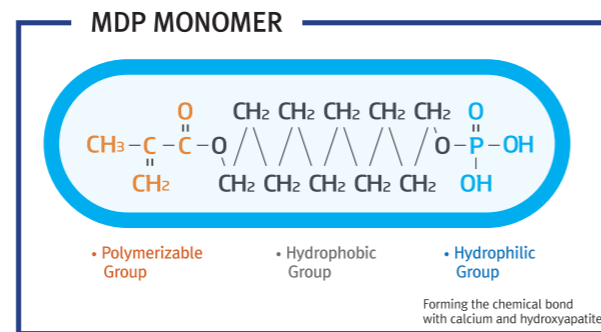


Packages

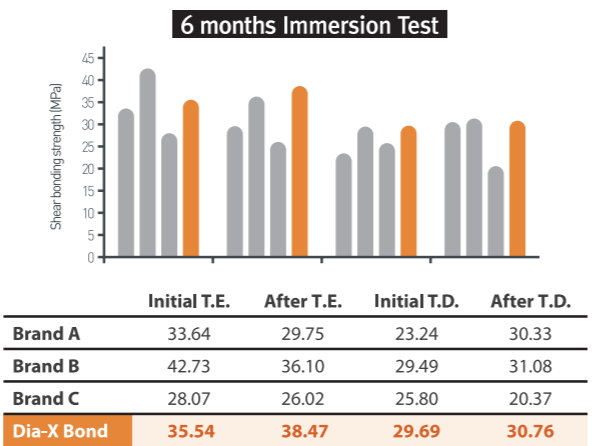
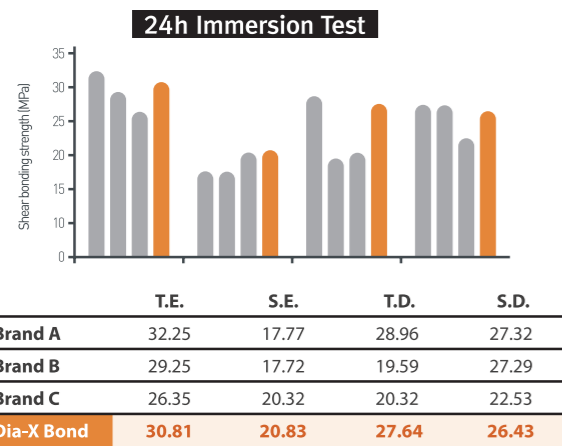
- ITEM #A2001-2201 - One-bottle bonding agent(1 bottle x 5ml)

10-MDP Monomer Features

- The 10-MDP monomer component shows excellent bonding strength to metals such as zirconia and alumina
- Excellent overall bonding strength to teeth (dentin, enamel), indirect restorations (metal, zirconia, alumina), and direct restorations (composite resin)
- Excellent chemical bonding with tooth components due to the structure of the hydrophilic group of 10-MDP
- It has low solubility in water and forms excellent chemical bonding with the tooth surface
- 10-MDP monomer has excellent solubility stability compared to other monomers, as it is the most hydrophobic of the adhesive functional monomers



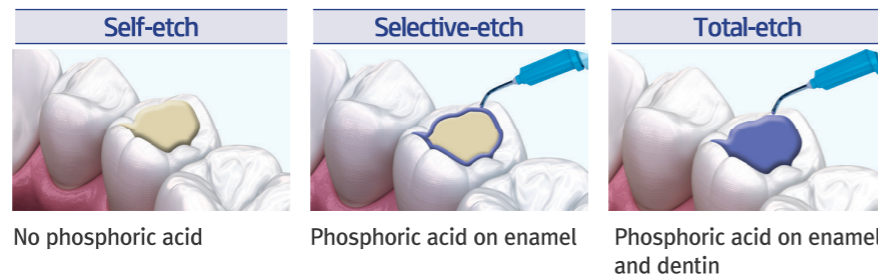
Direct Restoration Immersion Tests



- Conditions
- Composite resin: DiaFil
 - 37% Etching Gel: DiaEtch
 - Light curing with D-Lux+ (high mode 10 secs)

- Conditions
- Number of specimens: 15 ea
 - Light curing with D-Lux+ (high mode 10 secs)
 - 6 months / 37°C / 1mm/min shear adhesion measurement

Abbreviation: T.E. (Total Etching Enamel) / S.E. (Self Etching Enamel) / T.D. (Total Etching Dentin) / S.D. (Self Etching Dentin)

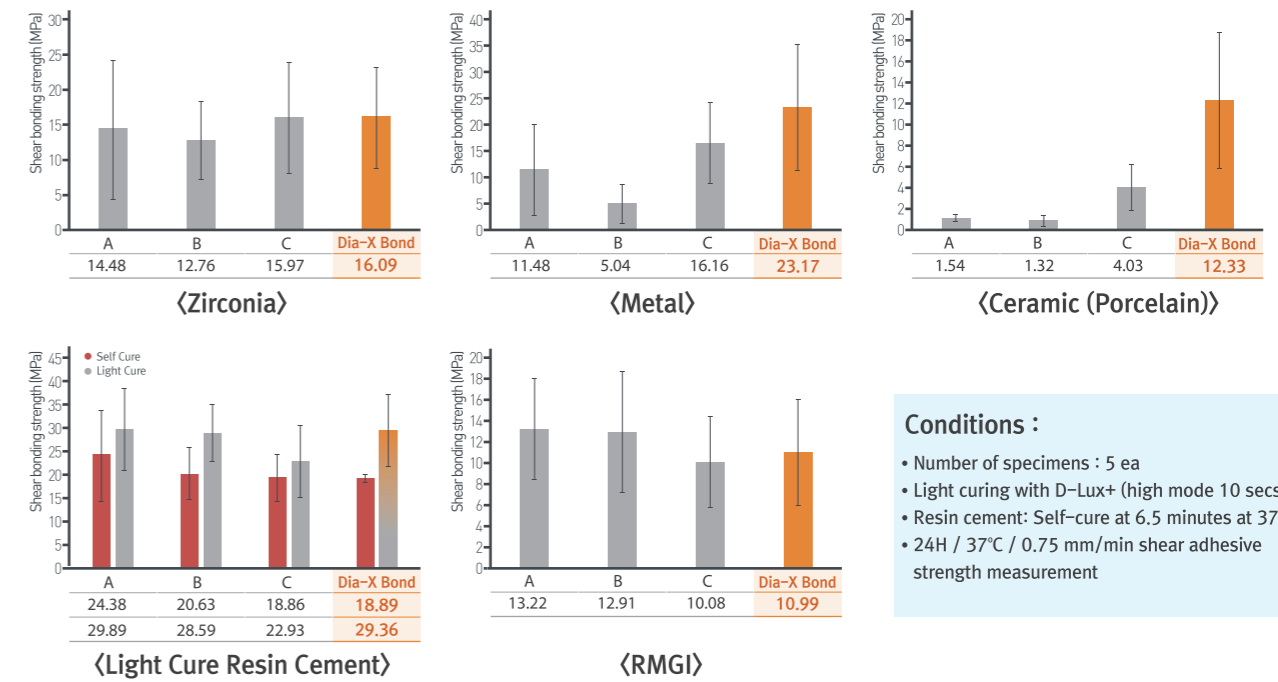


DIA-X BOND™ UNIVERSAL

UNIVERSAL BONDING AGENT

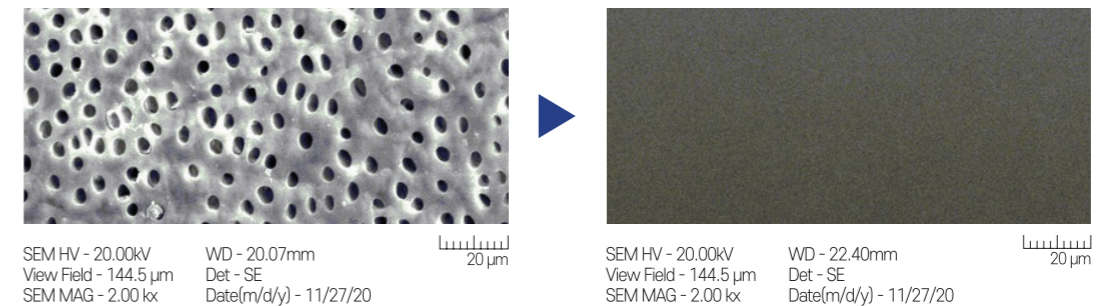
NEW

Indirect Restoration Material Comparison Tests



- Conditions :**
- Number of specimens : 5 ea
 - Light curing with D-Lux+ (high mode 10 secs)
 - Resin cement: Self-cure at 6.5 minutes at 37°C
 - 24H / 37°C / 0.75 mm/min shear adhesive strength measurement

Desensitization / Dentin Tubules Occlusion



SEM shows Dia-X Bond Universal's desensitization effectiveness by completely occluding the dentin tubules.

DISPOSABLE BRUSHES



- Flexible adhesive tip allows restorations and small objects of all kind to be picked up, held, carried and placed quickly and easily

Size	ITEM No.
Small	2001-6301
Medium	2001-6302
Large	2001-6303

(Pkg. of 100)

DIA-CEM™

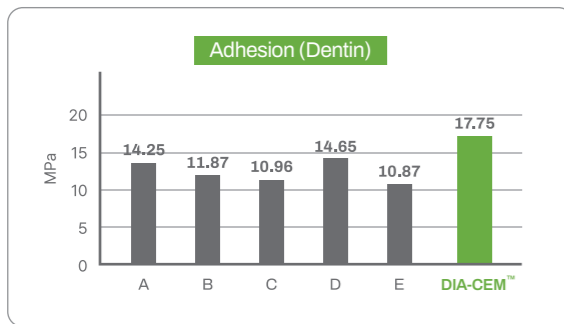
DUAL-CURE ADHESIVE RESIN CEMENT

NEW

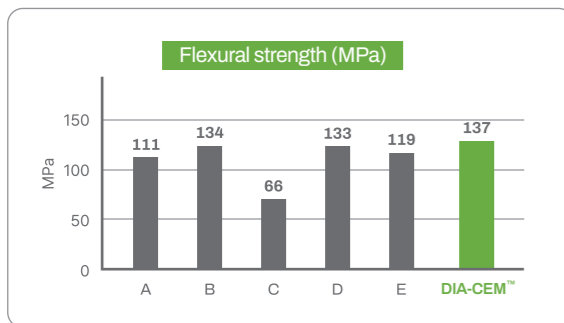


Benefits

- **Easy dispensing and mixing**
 - Dia-Cem is a two-paste cement filled in a double-barreled syringe that makes it easy to dispense using eco tip and mixing tip the 1:1 ratio components onto a mixing paper and dental prosthesis.
- **Easy Clean-up of excess cement**
 - Specifically formulated to allow for quick and easy removal cement
- **Tack curing method**
 - Tack curing any excess cement for 1~2 seconds at several spots and the semi-cured excess cement can be removed easily.
- **Chemical curing method**
 - Leave any excess cement for 2~4 minutes after placement of the prosthetic restoration and the semi-cured excess cement can be removed easily.



Adhesion (Dentin)	Average (MPa)
A	14.25
B	11.87
C	10.96
D	14.65
E	10.87
DIA-CEM™	17.75



	Flexural strength (MPa)	Film thickness (µm)
A	111	10.9
B	134	21.9
C	66	38.3
D	133	38.3
E	119	27.4
ISO4049	More than 50MPa	Less than 50µm
DIA-CEM™	137	12.8

Packages

- 1 Syringe of 9g
- 3 Auto Mixing Tips
- 3 Root Canal Tips
- 1 Eco Tip

Shade	ITEM No.
TR (Clear)	A2004-2104
A2	A2004-2105
A30	A2004-2106

DIACEM™ TEMPNE

ZINC OXIDE NON-EUGENOL TEMPORARY CEMENT

NEW



Indications

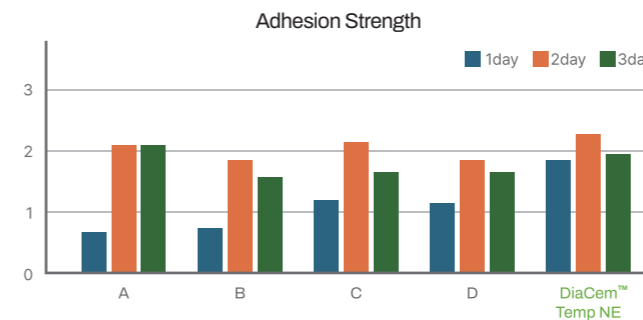
- Zinc oxide / Non-eugenol temporary cement
- Temporary cementation of crowns, bridges, inlays, onlays, etc.
- Temporary cementation of temporary / permanent restorations

Benefits

- Does not inhibit the polymerization of acrylic resin and temporary cements.
- Can be used for patients allergic to eugenol.
- The restoration can be easily removed at any time.
- Adequate flow properties and excellent resistance to chewing stress.
- Excellent initial adhesion and consistent durability. Suitable removal strength.
- Maintain a stable phase
- Good workability with long working time and fast setting time.
- Working time ≥ 2 min.
- Setting time ≤ 4min. (intraoral)

Advantages

- **Adhesion**
 - The initial (1-day) adhesion is superior to that of competitors.
 - The adhesion is maintained at a constant level after 1 day.
- **Workability**
 - The working time is more than 2 minutes, which is sufficiently long compared to other companies' products, so it is easy to work with and the setting time is not slow.
- **Phase stability of the base**
 - Most of the competitive products of DiaCem Temp NE have a lot of phase separation during accelerated aging test and even during storage at room temperature.
 - When phase separation occurs, the liquid phase is discarded and mixed. Also, the viscosity is not constant and the curing speed is not constant.



	1day	3day	7day
A	0.52	2.02	2.03
B	0.66	1.90	1.54
C	1.46	2.34	1.50
D	1.09	1.88	1.57
DiaCem™ Temp NE	1.89	2.43	1.97

	Working time (25°C)	Setting time (37°C Rh95%)
A	02:00	03:10
B	01:35	01:35
C	01:35	02:15
D	02:00	03:20
E	01:30	01:50
DiaCem™ Temp NE	02:30	02:50

Packages

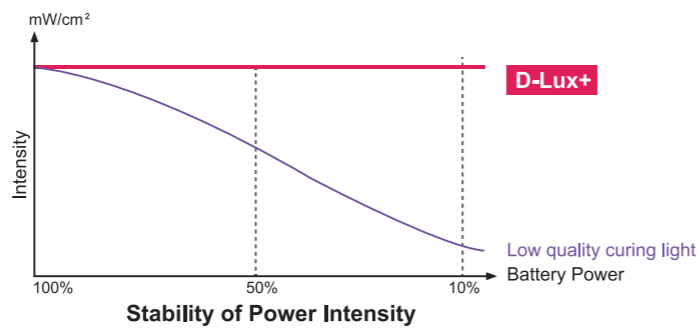
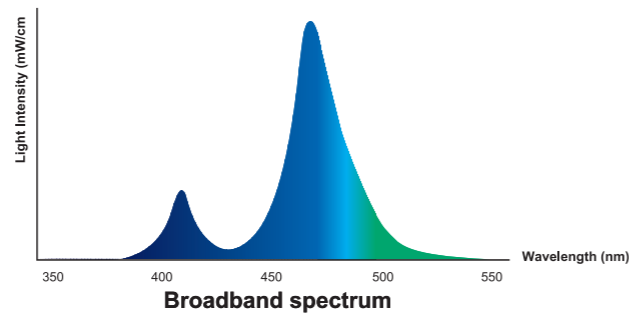
- **ITEM #A2004-6911**
 - 2 Syringes of 10g
 - 10 Automixing tips
 - 1 Eco tip

D-LUX+ CORDLESS LED CURING LIGHT

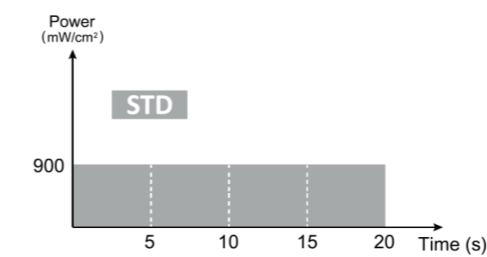
D-LUX+ is a high performance dual-wavelength Cordless LED Curing Light. Built and designed with the highest quality and durability, its dual-wavelength can efficiently, effectively, and uniformly polymerize all light-cured dental materials. At its maximum light intensity output of 2,400mW/cm², it can complete all restorations safely and efficiently.

Features

- A high intensity output of 2,400mW/cm² and 10W LED offers short curing time and efficient polymerization
- 360° swivel light probe and silicone ring tip ensure patient comfort
- **Dual-wavelength** with 4 LED lamps can efficiently polymerize all dental materials
- Broadband spectrum of 385nm~515nm
- Five (5) versatile curing modes allow flexible curing time and power intensity including 1second curing and Orthodontic curing mode
- **Wireless battery charging system** eliminates any potential charging contact problems
- High capacity 2,600mAh Li-ion battery offers longer battery life
- Built-in Light Intensity Measurement Sensor provides peace of mind so clinicians can always verify if the intensity is within normal range
- Designed ergonomically, the handpiece is light and elegant so it can easily reach all curing sites and offers maximum comfort for both patient and clinician

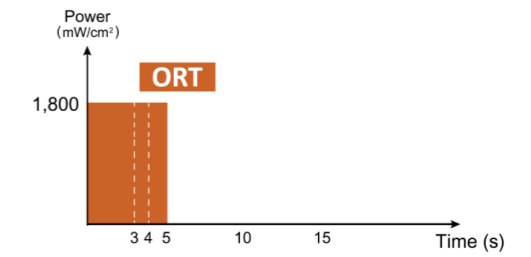


5 CURING MODES



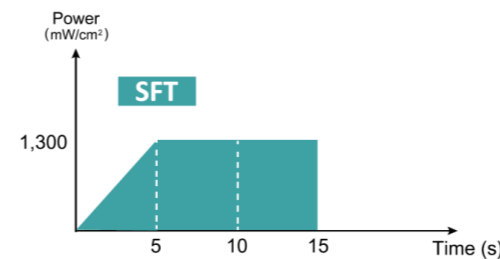
STD (Standard):

900mW/cm²(±10%) light intensity for 5, 10, 15, or 20 seconds



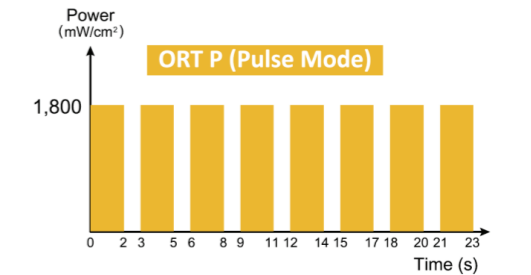
ORT (Orthodontic):

1,800mW/cm²(±10%) light intensity for 3, 4, 5 seconds or P (pulse)



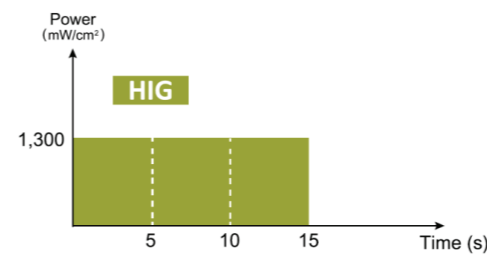
SFT (Soft start):

Light intensity gradually increases to 1,300mW/cm²(±10%) for 10 or 15 seconds



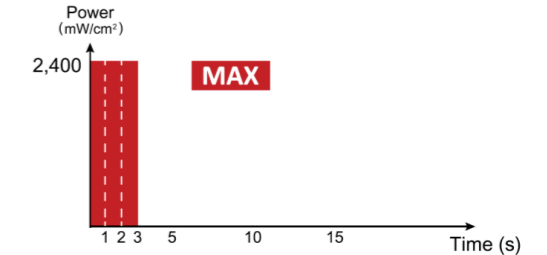
ORT P (Orthodontic Pulse Mode):

1,800 mW/cm² (±10%) of light turns on for 2 seconds and then off for 1 second eight times



HIG (High Power):

1,300mW/cm²(±10%) light intensity for 5, 10, or 15 seconds



MAX (Max Power):

2,400mW/cm²(±10%) light intensity for 1, 2, or 3 seconds

PRODUCT FEATURES

Wireless battery charging system



Dual-wavelength with 4 LED lamps, Broadband Spectrum of 385nm~515nm



Built-in light intensity sensor



Package

- ITEM #4008-1001 Regular Kit
 - D-Lux+ Handpiece & Charger
 - Light Probe
 - Light Protector
 - Disposable Sheaths(200ea/Box)
 - Power Supply(Adapter), Power Cord

Accessories

- ITEM #4008-1110 Handpiece
- ITEM #4008-1120 Charger
- ITEM #4008-1130 Light Probe
- ITEM #4008-1140 Battery Pack
- ITEM #4008-1150 Light Protector
- ITEM #4008-1160 Power Supply(Adapter)
- ITEM #4008-1161 Power Cord
- ITEM #4008-1170 Disposable Sheaths(200ea/Box)

DIA-X FILE

NICKEL TITANIUM ROTARY FILES WITH GOLD HEAT TREATMENT

• **Superior Cutting Efficiency**

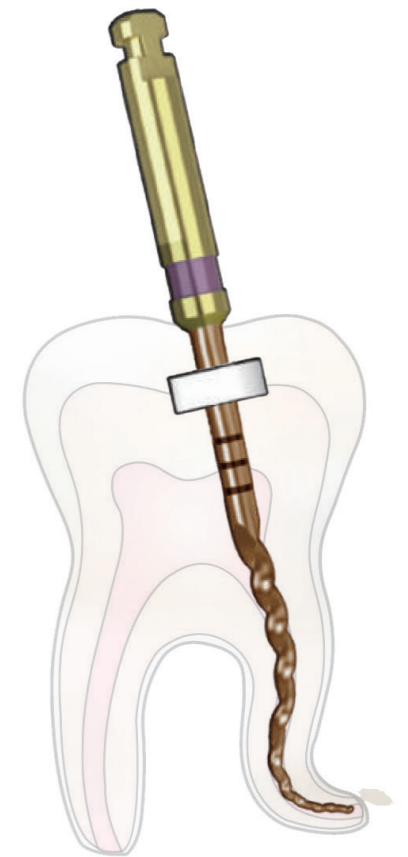
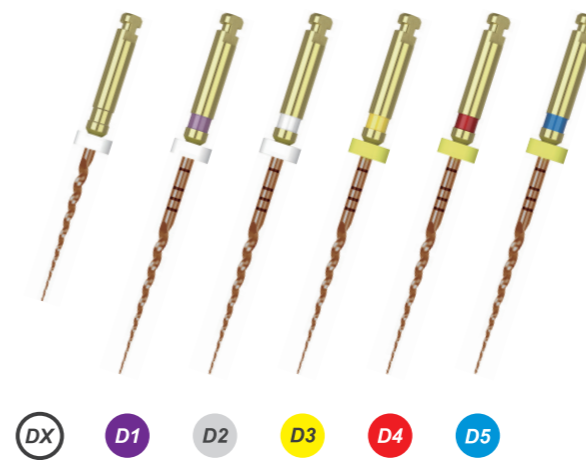
- Allows stronger and more sharp blades to more deeper in the canal
- A triangular cross section reduces contact with the canal wall

• **High Flexibility**

- Offers outstanding flexibility and reduces a user fatigue
- Has high corrosion resistance with a coated surface of files

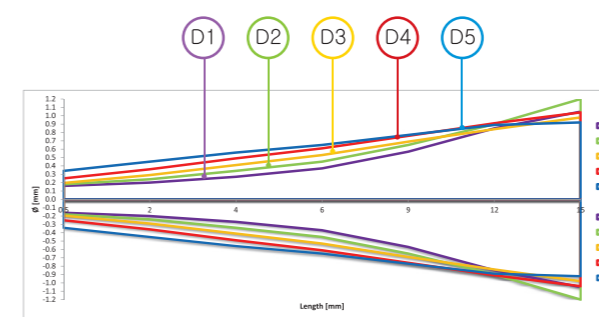
• **Short Shaping Time**

- Decreases total shaping time versus a traditional rotary technique
- Easily shape in calcified or highly curved canals



Dia-X File is the nickel titanium rotary files with **Gold Heat Treatment** can be achieved greater flexibility than other Nickel Titanium Files and offer smoother and safer progression in the root canal. The fracture resistance has been increased 143% after Gold Heat Treatment.

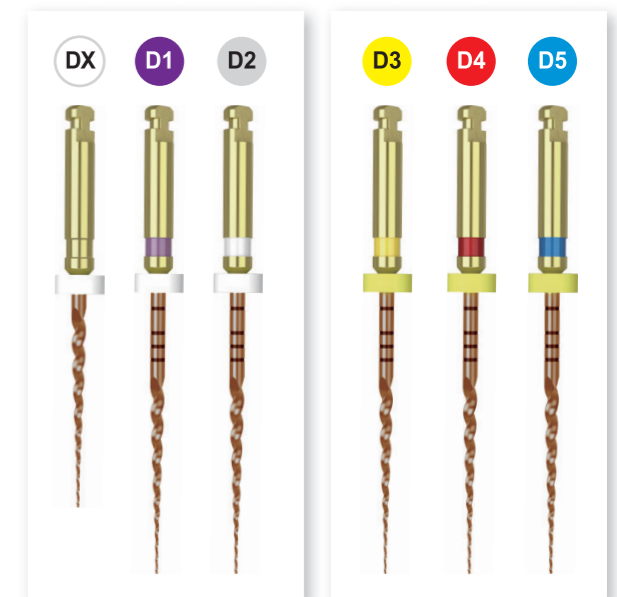
Rate of Taper



- Easy to confirm the size due to using Depth Markings and ISO color coded.
- Minimizes pressure to files with advanced stability.
- Improved performance for entering root canal and efficiently removable debris.
- Makes it excellent cutting.

Shaping

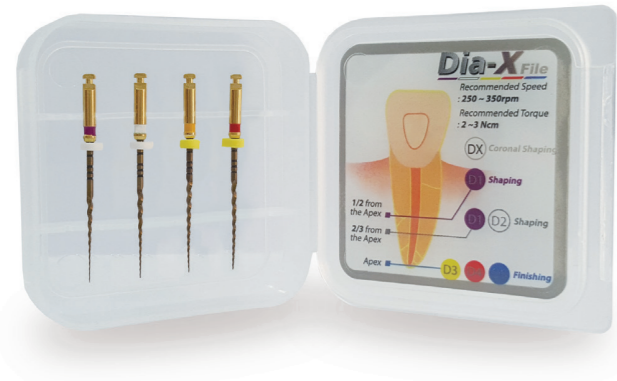
Finishing



ENDODONTIC INSTRUMENTS

- Nickel Titanium Rotary Files with Gold Heat Treatment
- Nickel Titanium Rotary Files with Blue Heat Treatment
- Gate Drills, Peeso Reamers
- Nickel Titanium Hand Files
- Stainless Steel Hand Files
- Endo Condenser
- EDTA Root Canal Preparation Cream
- Endodontic Irrigation Tips
- Endo Gauges
- Irrigation Syringes

DIA-X FILE NICKEL TITANIUM ROTARY FILES WITH GOLD HEAT TREATMENT



Size	19mm	21mm	25mm
#DX	571-S100		
#D1		571-S101	571-S201
#D2		571-S102	571-S202
#D3		571-S103	571-S203
#D4		571-S104	571-S204
#D5		571-S105	571-S205
#Asst D1/D4		571-S191	571-S291
#Asst DX/D3		571-S192	571-S292

(Pkg. of 4)

Instruction

DX

- Check the working length with X-ray.
- Prepare the straight-line access to canal orifice.

D1

- The D1 expands the glide path and enlarges to widen the coronal portion of canal. Always irrigate the canal with NaOCl before engaging the file. Gently work D1 until a smooth glide path is confirmed.
- The D1 into the canal and follow the glide path and laterally brush before light resistance is appeared. And cut dentin on the out stroke to improve straight-line access and apical progression.
- Continue shaping and brushing with the D1 until the depth of the #15 hand file is reached.
- Check the working length with the #15 hand file and Apex locator.

D1

D2

- The D2 enlarges to the apical 2/3.
- Use D1 or D2 until working length is reached with a brushing action.
- Confirm working length frequently as shaping the severely curved canals.

D3

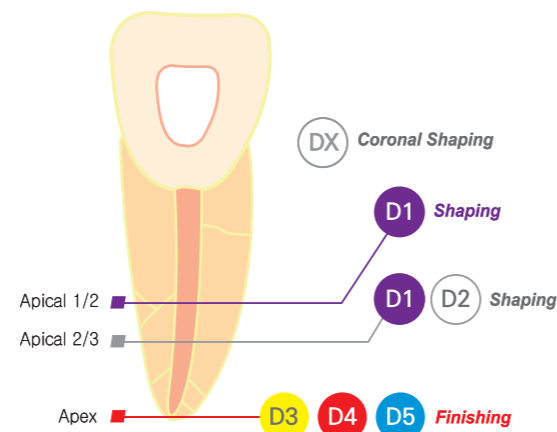
D4

D5

- Use D3 as an In-and-out Pecking Motion until the depth of the #20 hand file is reached.
- If the #20 hand file is loose at length, proceed to the D4 with corresponding the #25 hand file.
- If the #25 hand file is loose at length, proceed to the D5 with corresponding the #30 hand file.

DIA-X File

- RECOMMENDED SPEED : 250~350RPM
- RECOMMENDED TORQUE : 2~3 NCM

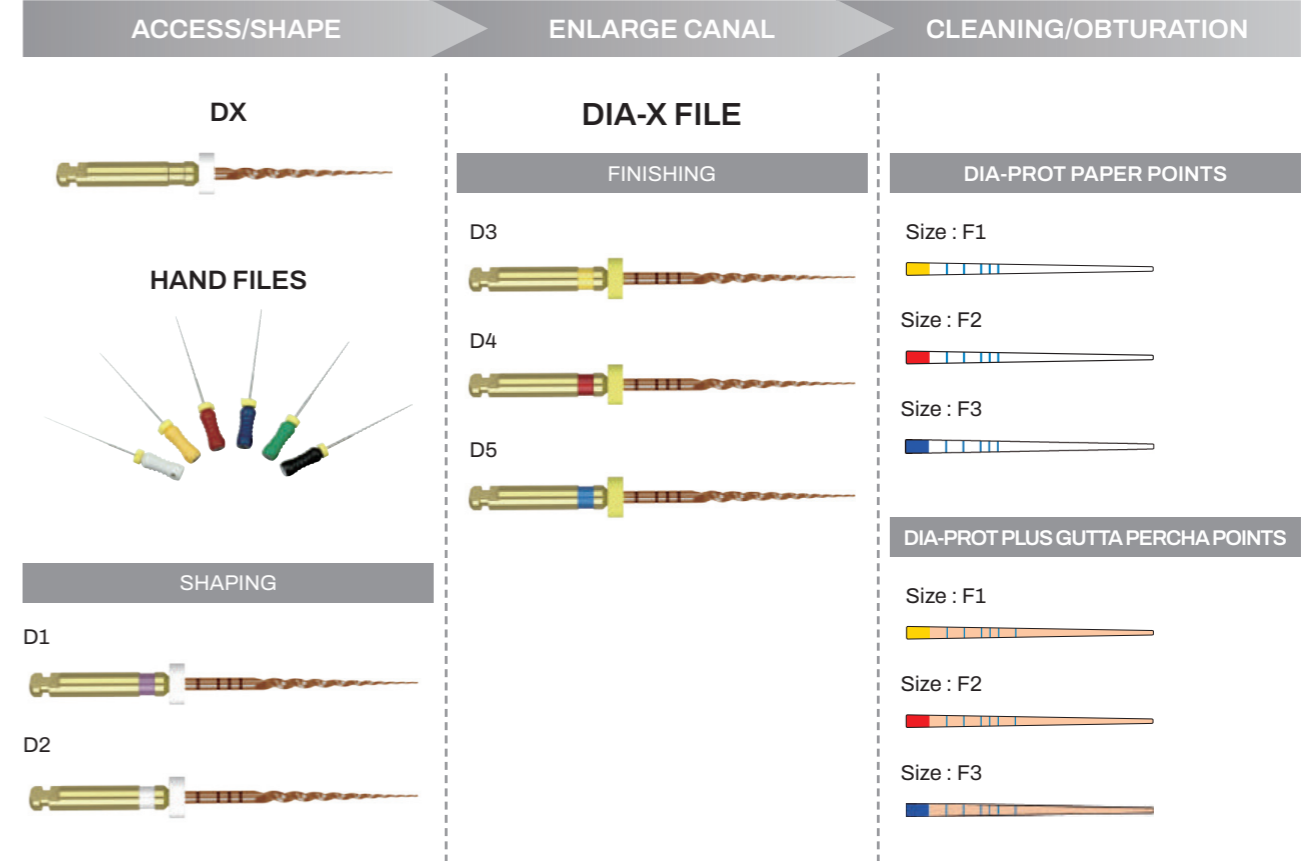


TIP

- Inspect files for distortion or wear, such as uneven flutes, dull spots or bending.
- Lubricate files generously with DIAPREP™ PRO.
- Remove the debris from its flutes before continuing.
- Irrigate and re-irrigate after using each rotary file.
- Dia-X File should be used at a constant rotation and stable speed of 300 rpm to avoid the file fracture.
- Use very light pressure. Never force instruments to working length.
- Use the files for no more than one or two seconds in the canal.
- Autoclave files always after use.

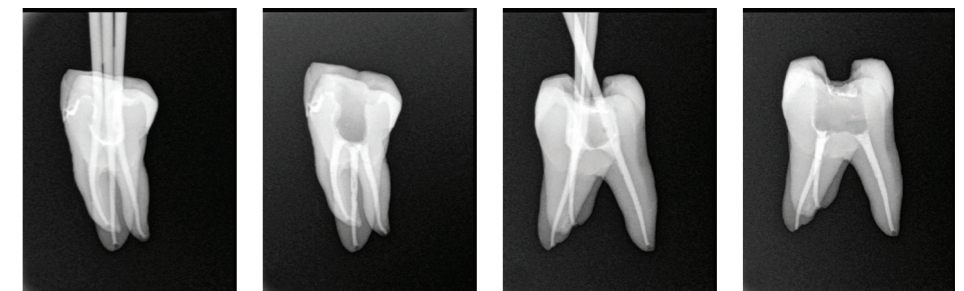
DIA-X FILE NICKEL TITANIUM ROTARY FILES WITH GOLD HEAT TREATMENT

CLINICAL PROCESS

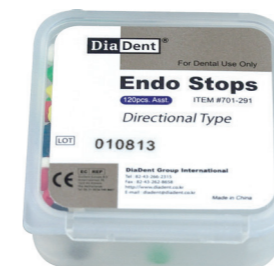


Radiographs

Precisely shaped and sealed root canals after the treatment with DIA-X File



ENDO STOPS



- ITEM #701-291
- Directional type
- 120 Stops and Assorted colors packed in a plastic box
- These endo stops can not be used with ENDO STOP DISPENSER



DIA-XR BLUE FILE

NICKEL TITANIUM ROTARY FILES WITH BLUE HEAT TREATMENT

Dia-XR Blue Files are designed for one file shaping and made by Nickel Titanium with a blue heat treatment. Dia-XR Blue Files allow a greater flexibility enabling a safer and smoother canal preparation procedure and a wider range of clinical cases.



Instruction

- **Canal Preparation**
 - Prepare the straight-line access to canal orifice by Gate Drills
 - Check the working length and canal with X-Ray
 - Moves the file in-and-out pecking motion with a very light pressure and continues the root canal preparation until approx. 2/3 of the estimated working length
 - Repeats shaping until it reaches working length
- **Canal Retreatment**
 - Remove Gutta Percha materials in the coronal third with Gate Drills
 - Use R25 by a brushing motion against lateral walls until working length has been reached
 - If it has the resistance, do not apply the pressure
 - Remove the instrument from the canal and reapply the solvent and try again

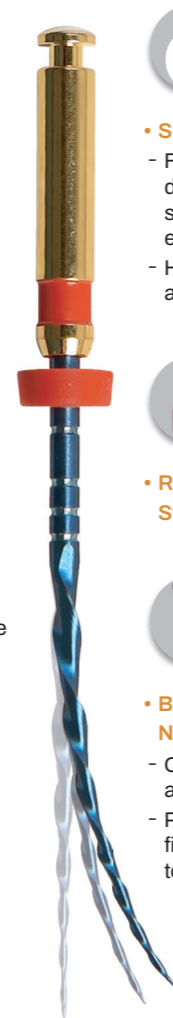


Size	21mm	25mm
R25	581-105	581-205
R40	581-108	581-208
R50	581-110	581-210
ASST	581-191	581-291

(Pkg. of 6)

Features

- **One File System**
 - Offers very simple root canal preparation
 - A root canal can be completely prepared with only one file
- **Variable Taper**
- **Reciprocating Motion**
 - Offers higher resistance to cyclic fatigue and a reduced risk of instrument fracture
 - Its controlled acceleration and deceleration bring the safety
- **Safe Guiding Tip**
- **S-Shaped Cross Section**
 - Files with this special design progress smoothly and cut efficiently
 - Has strong centering ability
- **Radiopaque Silicone Stopper**
- **Blue Heat Treated Ni-Ti Instrument**
 - Offers high flexibility and a good cutting efficiency
 - Possible to pre-bend the file for an easier access to the canal



GATE DRILLS

- Used for time-saving preparation of the upper and middle part of non-curved canal or the straight part of curved canal effectively and creating the excellent access for Reamers and Files.
- Enlarge the straight coronal portion of the canal with Gate Drills and then step down with Endodontic Files using the biggest size firstly as the Crown Down Technique.
- Superior Stainless Steel with the improved cutting capacity.
- Circle ring is coded on the shank.
- Recommended Speed: 800~1200r/min

Size	28mm	32mm
#1	531-101	531-201
#2	531-102	531-202
#3	531-103	531-203
#4	531-104	531-204
#5	531-105	531-205
#6	531-106	531-206
#Asst1/6	531-191	531-291

(Pkg. of 6)



PEESO REAMERS

- Used for the preparation of coronal third and picking up the fillings inside the root canal.
- Often used for the post path.
- Excellent stainless steel with a sharper blade to provide the rapid enlargement.
- Circle ring is coded on the shank.
- Recommended speed: 800~1200r/min

Size	28mm	32mm
#1	541-101	541-201
#2	541-102	541-202
#3	541-103	541-203
#4	541-104	541-204
#5	541-105	541-205
#6	541-106	541-206
#Asst1/6	541-191	541-291

(Pkg. of 6)



ENDODONTIC NICKEL TITANIUM HAND FILES

Increased Flexibility

NiTi Shaft is made of premium Nickel-Titanium with 5 times the flexibility compared to Stainless Steel Files.

Strength

NiTi has 10 times the stress resistance compared to Stainless Steel Files.

Convenience

Produces smooth and progressive enlargement of root canal.
NiTi follow existing canal path and has memory so there is no need to Pre-Bend the files.

Efficiency

Color Coded handles and pre-inserted silicone stops.

Safety

NiTi resists spontaneous breakage.
Increased angular rotation reduces fracture.
NiTi decreases zipping and stripping.



NITI REAMERS

NICKEL-TITANIUM REAMERS(.02 TAPER)

Size	21mm	25mm
#8	NT501-101	NT501-201
#10	NT501-102	NT501-202
#15	NT501-103	NT501-203
#20	NT501-104	NT501-204
#25	NT501-105	NT501-205
#30	NT501-106	NT501-206
#35	NT501-107	NT501-207
#40	NT501-108	NT501-208
#45	NT501-109	NT501-209
#50	NT501-110	NT501-210
#55	NT501-111	NT501-211
#60	NT501-112	NT501-212
#70	NT501-113	NT501-213
#80	NT501-114	NT501-214
#15/40	NT501-191	NT501-291
#45/80	NT501-192	NT501-292

(Pkg. of 6)



NITI K-FILES

NICKEL-TITANIUM K-FILES(.02 TAPER)

Size	21mm	25mm
#8	NT502-101	NT502-201
#10	NT502-102	NT502-202
#15	NT502-103	NT502-203
#20	NT502-104	NT502-204
#25	NT502-105	NT502-205
#30	NT502-106	NT502-206
#35	NT502-107	NT502-207
#40	NT502-108	NT502-208
#45	NT502-109	NT502-209
#50	NT502-110	NT502-210
#55	NT502-111	NT502-211
#60	NT502-112	NT502-212
#70	NT502-113	NT502-213
#80	NT502-114	NT502-214
#15/40	NT502-191	NT502-291
#45/80	NT502-192	NT502-292

(Pkg. of 6)



NITI H-FILES

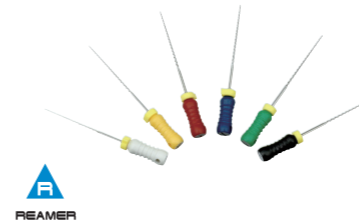
NICKEL-TITANIUM H-FILES(.02 TAPER)

Size	21mm	25mm
#8	NT503-101	NT503-201
#10	NT503-102	NT503-202
#15	NT503-103	NT503-203
#20	NT503-104	NT503-204
#25	NT503-105	NT503-205
#30	NT503-106	NT503-206
#35	NT503-107	NT503-207
#40	NT503-108	NT503-208
#45	NT503-109	NT503-209
#50	NT503-110	NT503-210
#55	NT503-111	NT503-211
#60	NT503-112	NT503-212
#70	NT503-113	NT503-213
#80	NT503-114	NT503-214
#15/40	NT503-191	NT503-291
#45/80	NT503-192	NT503-292

(Pkg. of 6)

ENDODONTIC STAINLESS STEEL HAND FILES

- Root canal cleaning and shaping instruments
- Offers superior cutting efficiency on insertion and withdrawal and procession handling
- Ergonomic color coded handle provides comfort and excellent tactile feedback
- Available in sizes 8 through 80 and 21mm, 25mm & 31mm lengths



REAMERS

- Made from Stainless Steel wire that is ground to triangular shape and twisted

Size	21mm	25mm	31mm
#8	SS501-101	SS501-201	SS501-301
#10	SS501-102	SS501-202	SS501-302
#15	SS501-103	SS501-203	SS501-303
#20	SS501-104	SS501-204	SS501-304
#25	SS501-105	SS501-205	SS501-305
#30	SS501-106	SS501-206	SS501-306
#35	SS501-107	SS501-207	SS501-307
#40	SS501-108	SS501-208	SS501-308
#45	SS501-109	SS501-209	SS501-309
#50	SS501-110	SS501-210	SS501-310
#55	SS501-111	SS501-211	SS501-311
#60	SS501-112	SS501-212	SS501-312
#70	SS501-113	SS501-213	SS501-313
#80	SS501-114	SS501-214	SS501-314
#15/40	SS501-191	SS501-291	SS501-391
#45/80	SS501-192	SS501-292	SS501-392

(Pkg. of 6)

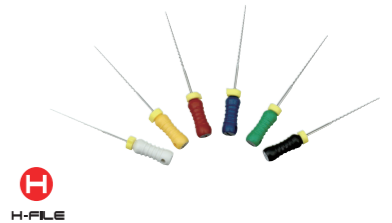


K-FILES

- Designed to clean and shape root canals
- Produced to give operators a smooth tactile sense inside the canal during instrument

Size	21mm	25mm	31mm
#8	SS502-101	SS502-201	SS502-301
#10	SS502-102	SS502-202	SS502-302
#15	SS502-103	SS502-203	SS502-303
#20	SS502-104	SS502-204	SS502-304
#25	SS502-105	SS502-205	SS502-305
#30	SS502-106	SS502-206	SS502-306
#35	SS502-107	SS502-207	SS502-307
#40	SS502-108	SS502-208	SS502-308
#45	SS502-109	SS502-209	SS502-309
#50	SS502-110	SS502-210	SS502-310
#55	SS502-111	SS502-211	SS502-311
#60	SS502-112	SS502-212	SS502-312
#70	SS502-113	SS502-213	SS502-313
#80	SS502-114	SS502-214	SS502-314
#15/40	SS502-191	SS502-291	SS502-391
#45/80	SS502-192	SS502-292	SS502-392

(Pkg. of 6)



H-FILES

- Ground from Stainless Steel wire
- The flute depth increases with the taper, creating a shaper, more flexible instrument

Size	21mm	25mm	31mm
#8	SS503-101	SS503-201	SS503-301
#10	SS503-102	SS503-202	SS503-302
#15	SS503-103	SS503-203	SS503-303
#20	SS503-104	SS503-204	SS503-304
#25	SS503-105	SS503-205	SS503-305
#30	SS503-106	SS503-206	SS503-306
#35	SS503-107	SS503-207	SS503-307
#40	SS503-108	SS503-208	SS503-308
#45	SS503-109	SS503-209	SS503-309
#50	SS503-110	SS503-210	SS503-310
#55	SS503-111	SS503-211	SS503-311
#60	SS503-112	SS503-212	SS503-312
#70	SS503-113	SS503-213	SS503-313
#80	SS503-114	SS503-214	SS503-314
#15/40	SS503-191	SS503-291	SS503-391
#45/80	SS503-192	SS503-292	SS503-392

(Pkg. of 6)

DIA-KONDENSOR



- Having both a nickel-titanium end and a stainless steel end, it can be used in any common endodontic obturation technique including warm and cold condensation.
- Excellent durability.
- Can be supplied 1 piece or a set included each 4 sizes.
- Convenient use with color-coding on the condensers.
- Lightweight and comfort design

Size	ITEM No.
#35/70(Green)	551-101
#40/80(Black)	551-102
#50/100(Yellow)	551-103
#60/120(Blue)	551-104
Set (4pcs)	551-191

DIAPREP™ PRO

EDTA ROOT CANAL PREPARATION CREAM

EDTA Cream with Urea Peroxide, used as an irrigation agent for chemo-mechanical preparation of the root canal.



Characteristics

- Debridement in the root canal
- Dissolution of pulp remnants
- Removal of smear layer
- Facile movements of canal instruments
- Microbicidal treatment within the canal
- Clearance of dentin tubules and apical area

Benefits

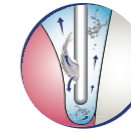
- EDTA removes smear layer, softens dentin, and facilitates the removal of calcific obstruction.
- Urea Peroxide reacts with Sodium Hypochlorite to produce oxygen bubbles that flush out debris within the canal.
- The lubricant medium facilitates instrument movement within the canal to eliminate instrument binding or breakage.
- Unclogged dentin tubules and apical area permit better penetration of root canal medicaments and fillings.
- Provides rapid cleansing and enlarging of canals due to EDTA, which softens walls and smooth calcium deposits.
- Easier placement into canals than liquids.

Packages

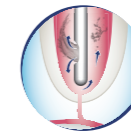
- ITEM #2002-4100
 - 2 syringes of 6g and 10 disposable tips with 1 protective cap
- ITEM #2001-6119
 - 10 disposable tips

STERI. IRRIGATION TIPS-SIDE OPEN TYPE

- Disposable Endodontic & Periodontal Irrigation Tips with Safety.
- Unique design with a side-port for superior effectiveness and patient comfort in irrigating root canals and periodontal pockets.
- Pre-sterilized by E.O Gas.
- Use with Luer Lock Syringes.
- Side-Port and Closed-end Irrigation tips.



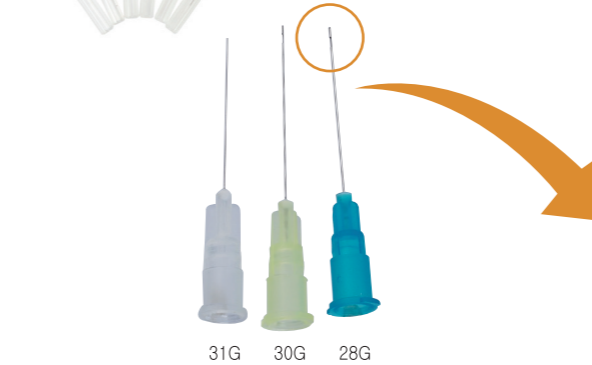
PERIODONTAL POCKETS
Side-port design can make an effective irrigate pockets and closed, rounded tip can reduce the risk of tissue damage.



ROOT CANALS
Side-port dispersal can create an upward flushing motion for the complete root canal preparations and cleanse the gingival sulci fully without damaging tissue.

Size	Color	ITEM No.
31G (0.25 x 25mm)	Clear White	951-101A
30G (0.30 x 25mm)	Yellow	951-102A
28G (0.36 x 25mm)	Blue Green	951-103A

(Pkg. of 50)



IRRIGATION TIPS-END OPEN TYPE



- Disposable Endodontic & Periodontal Irrigation tips
- Use with Luer Lock Syringes.
- Thoroughly irrigate root canal preparations.
- Round end tip can prevent the secondary injury during the use.
- Widest selection of tips: 6 sizes from 18G to 27G.

Size	Color	ITEM No.
18G (1.2 x 25mm)	Pink	951-201A
19G (1.1 x 25mm)	Cream	951-202A
20G (0.9 x 25mm)	Yellow	951-203A
22G (0.7 x 25mm)	Black	951-204A
25G (0.5 x 25mm)	Orange	951-205A
27G (0.4 x 25mm)	Medium Grey	951-206A

(Pkg. of 100)

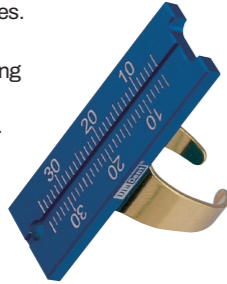


DIA-ENDORING

• ITEM #850-001



- A convenient ring for Hand & Rotary Files.
- Gauges from 1 to 30mm.
- A simple & practical design for measuring files.
- Gold plated ring prevents color change.
- Dimension: 45x25x15m/m (WxHxD)

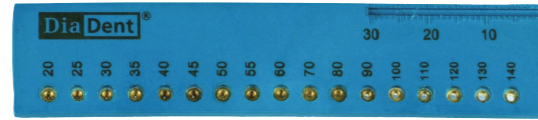


DIA-GP GAUGE

• ITEM #781-001



- Designed to size a perfect master cone from any Gutta Percha Points.
- Drop it into the apical size and cut off with a blade.
- Autoclavable
- Dimensions: 92x3x20m/m(WxHxD)

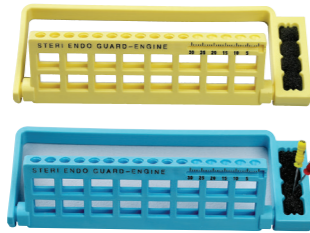


STERI ENDO GUARD W/RULER(ENGINE FILE)

• ITEM #716-203 Yellow
• ITEM #716-206 Blue



- Holds 16 NiTi Rotary Files.
- Right or left hand use.
- Available to insert sponge to clean or hold files.
- Diameter: 75m/m,
Height: 35m/m



FILE MEASURE SET(PLASTIC)

• ITEM #780-001

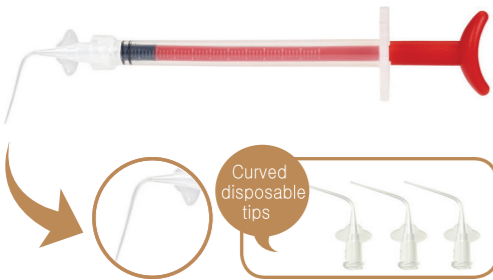


- Holds 32 Measuring Grades.
- Gauge from 12 to 27.5m/m, Including half measurements.
- Dimensions:
- 87x31x20m/m (WxHxD)



DIAFLEX™

IRRIGATION SYRINGE FOR ROOT CANAL



- Flexible soft polypropylene tip syringe for root canal irrigation.
- Autoclavable and chemoclavable for multiple use up to 50 times.
- 1.3ml volume imprinted at intervals of 1mm.
- Provides maximum clinical effect in a minimum of time.
- DiaFlex is compatible with Luer Lock Syringes

DiaFlex - III

- ITEM #1003-301
 - Package of 3 color coded syringes, 20 changeable tips and silicone oil

DiaFlex - V

- ITEM #1003-501
 - Package of 5 color coded syringes, 20 changeable tips and silicone oil
- ITEM #1001-320
 - Clear Disposable Tips(Curved)**
 - 20 disposable tips